

Anti-EHMT2 Antibody

CATALOG NO:	A1676-100	100 µl
ALTERNATIVE NAMES:	BAT8; C6orf30; G9A; KMT1C; NG36; Histone-lysine N-methyltransferase EHMT2; Euchromatic histone-lysine N-methyltransferase 2; HLA-B-associated transcript 8; Histone H3-K9 methyltransferase 3; H3-K9-HMTase 3; Lysine N-methyltransferase 1C; Protein G9a	
CONCENTRATION:	1 mg/ml	
IMMUNOGEN:	A synthesized peptide derived from human EHMT2	
HOST/ISOTYPE:	Rabbit IgG	
CLONALITY:	Polyclonal	
MOL WEIGHT:	132 kDa	
SPECIES REACTIVITY:	Human, Mouse, Rat	
PURIFICATION:	Affinity purification	
FORM:	Liquid	
FORMULATION:	Supplied in phosphate buffered saline, pH 7.4, 150 mM NaCl, 0.02% sodium azide and 50% glycerol	
STORAGE CONDITIONS:	For long term storage store at -20°C in small aliquots to prevent freeze-thaw cycles	
DESCRIPTION:	G9a, also known as Euchromatic histone-lysine N-methyltransferase 2 (EHMT2), is a member of a family of histone lysine methyltransferases, each of which contains a conserved catalytic SET domain originally identified in <i>Drosophila</i> Su[var]3-9, Enhancer of zeste, and Trithorax proteins. Recombinant G9a can mono-, di- and tri-methylate histone H3 on Lys9 and Lys27 in vitro. However, in vivo G9a forms a complex with GLP, a G9a-related histone methyltransferase, and together these proteins function as the major euchromatic histone H3 Lys9 mono- and dimethyltransferases, creating transcriptionally repressive marks that facilitate gene silencing. G9a methylates itself on Lys165, a modification that regulates the association of HP1 repressor proteins with the G9a/GLP complex.	
APPLICATION:	WB 1:500-1:2000, IHC 1:50-1:200	

Note: This information is only intended as a guide. The optimal dilutions must be determined by the user.

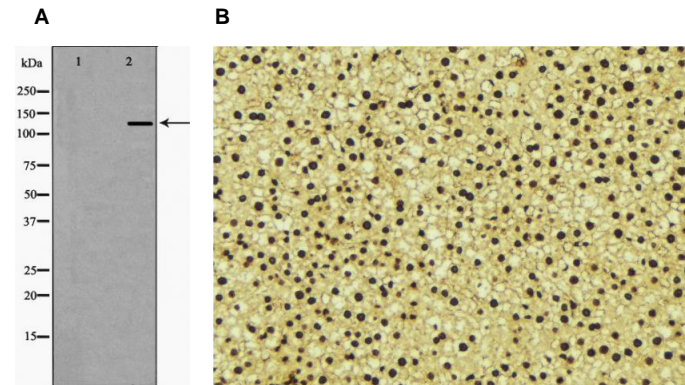


Fig. A. Western blot analysis of HeLa whole cell lysates, using EHMT2 Antibody. The lane on the left is treated with the antigen-specific peptide.

Fig. B. IHC staining of Mouse liver tissue using EHMT2 antibody

RELATED PRODUCTS:

- Anti-Integrin beta-1 Rabbit Monoclonal Antibody (**Cat. No. A1598**)
- SCF Antibody (**Cat. No. 6646**)
- SCF Antibody (**Cat. No. 5328**)
- SCF Antibody (**Cat. No. 5327**)
- OCT4 (OCT3) Antibody (**Cat. No. 6765**)
- Oct-4 Antibody (**Cat. No. 3576**)
- STAT3 Antibody (**Cat. No. 3470R**)

FOR RESEARCH USE ONLY! Not to be used on humans.