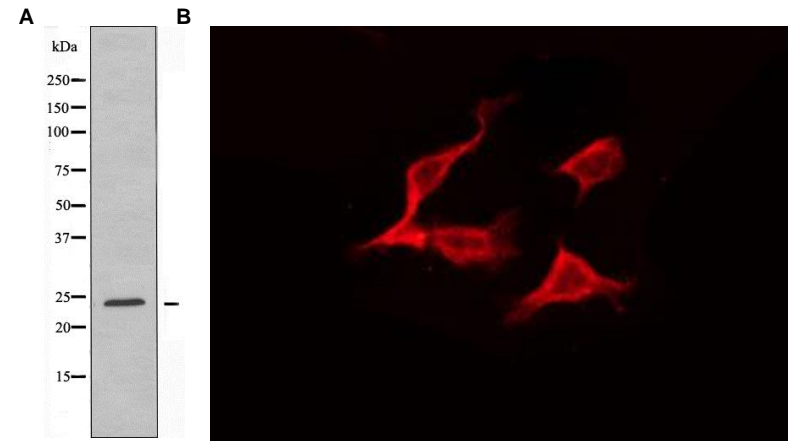


## Anti-ERAS Antibody

<b>CATALOG NO:</b>	A1677-100	100 µl
<b>ALTERNATIVE NAMES:</b>	E-Ras; ecat5; Embryonic stem cell expressed Ras; Embryonic stem cell-expressed Ras; Eras; ES cell expressed Ras; GTPase ERas; Ha-Ras2; HRAS2; HRASP	
<b>CONCENTRATION:</b>	1 mg/ml	
<b>IMMUNOGEN:</b>	A synthesized peptide.	
<b>HOST/ISOTYPE:</b>	Rabbit IgG	
<b>CLONALITY:</b>	Polyclonal	
<b>MOL WEIGHT:</b>	25 kDa	
<b>SPECIES REACTIVITY:</b>	Human, Mouse, Rat	
<b>PURIFICATION:</b>	Affinity purification	
<b>FORM:</b>	Liquid	
<b>FORMULATION:</b>	Supplied in phosphate buffered saline, pH 7.4, 150 mM NaCl, 0.02% sodium azide and 50% glycerol	
<b>STORAGE CONDITIONS:</b>	For long term storage store at -20°C in small aliquots to prevent freeze-thaw cycles	
<b>DESCRIPTION:</b>	Ras proteins bind GDP/GTP and possess intrinsic GTPase activity. Plays an important role in the tumor-like growth properties of embryonic stem cells.	
<b>APPLICATION:</b>	WB 1:500-1:1000, IF/ICC 1:100-1:500, ELISA (peptide) 1:20000-1:40000	

**Note:** This information is only intended as a guide. The optimal dilutions must be determined by the user.



**Fig. A.** Western blot analysis of extracts from Jurkat cells, using ERAS antibody.

**Fig. B.** IF/ICC staining of HeLa cells using ERAS antibody

### RELATED PRODUCTS:

- Anti-Integrin beta-1 Rabbit Monoclonal Antibody (Cat. No. A1598)
- SCF Antibody (Cat. No. 6646)
- SCF Antibody (Cat. No. 5328)
- SCF Antibody (Cat. No. 5327)
- OCT4 (OCT3) Antibody (Cat. No. 6765)
- Anti-TF2L1 Antibody (Cat. No. A1673)
- Anti-DDIT3 Antibody (Cat. No. A1674)
- Anti-DDX3 Antibody (Cat. No. A1675)
- Anti-EHMT2 Antibody (Cat. No. A1676)

**FOR RESEARCH USE ONLY! Not to be used on humans.**