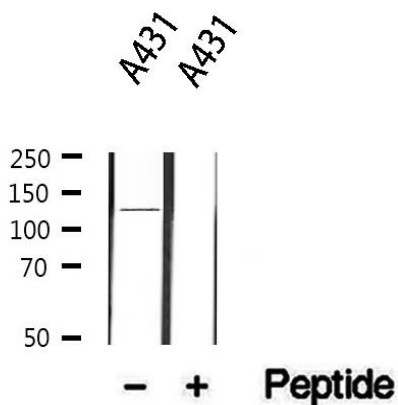


# Anti-ITGA6 Antibody

CATALOG NO.: A1681

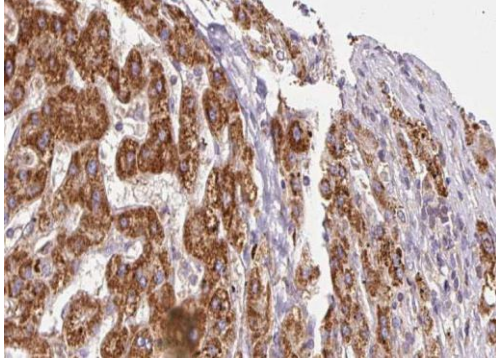
**BACKGROUND DESCRIPTION:** Integrin alpha-6/beta-1 is a receptor for laminin on platelets. Integrin alpha-6/beta-4 is a receptor for laminin in epithelial cells and it plays a critical structural role in the hemidesmosome. ITGA6:ITGB4 binds to NRG1 (via EGF domain) and this binding is essential for NRG1-ERBB signaling. ITGA6:ITGB4 binds to IGF1 and this binding is essential for IGF1 signaling. ITGA6:ITGB4 binds to IGF2 and this binding is essential for IGF2 signaling.

<b>ALTERNATE NAMES:</b>	Alpha6p; CD49 antigen-like family member F; CD49f; Integrin alpha6B; Integrin, alpha 6; ITA6_HUMAN; ITGA6; ITGA6B; Processed integrin alpha-6; VLA 6; VLA-6.
<b>AMOUNT:</b>	100 µl.
<b>HOST/ISOTYPE:</b>	Rabbit / IgG.
<b>IMMUNOGEN:</b>	A synthesized peptide derived from human ITGA6.
<b>MOLECULAR WEIGHT:</b>	127 kDa.
<b>PURIFICATION:</b>	Affinity purified.
<b>FORM:</b>	Liquid.
<b>FORMULATION:</b>	In phosphate buffered saline , pH 7.4, 150mM NaCl, 0.02% sodium azide and 50% glycerol. Store at -20 °C
<b>SPECIES REACTIVITY:</b>	Mouse. Human.
<b>STORAGE CONDITIONS:</b>	Store at -20°C; For long term storage store at -20°C in small aliquots to prevent freeze-thaw cycles.
<b>APPLICATIONS AND USAGE:</b>	Immunohistochemistry (IHC). Western Blotting. ELISA.



Western blot analysis of extracts from A431, using Anti-ITGA6 Antibody.

**FOR RESEARCH USE ONLY!**



**IHC staining of human liver cancer tissue using Anti-ITGA6 Antibody.**

**RELATED PRODUCTS:**

Anti-DDIT3 Antibody (Cat. No. A1674).  
Anti-Integrin beta-1 Rabbit Monoclonal Antibody (Cat. No. A1598).  
Anti-DDX3 Antibody (Cat. No. A1675).  
OCT4 (OCT3) Antibody (Cat. No. 6765).  
Anti-TF2L1 Antibody (Cat. No. A1673).

***FOR RESEARCH USE ONLY! Not to be used on humans.***