

# Anti-IRF6 Antibody

---

**CATALOG NO.:** A1682-100

---

**BACKGROUND DESCRIPTION:** Probable DNA-binding transcriptional activator. Key determinant of the keratinocyte proliferation-differentiation switch involved in appropriate epidermal development (By similarity). Plays a role in regulating mammary epithelial cell proliferation. May regulate WDR65 transcription.

**ALTERNATE NAMES:** Interferon regulatory factor 6; IRF-6.

**AMOUNT:** 100  $\mu$ l.

**HOST/ISOTYPE:** Rabbit / IgG.

**IMMUNOGEN:** Recombinant full length protein of human IRF-6.

**PURIFICATION:** Affinity purification.

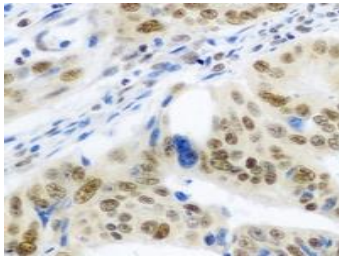
**FORM:** Liquid.

**FORMULATION:** In 0.42% Potassium phosphate; 0.87% Sodium chloride; pH 7.3; 30% glycerol; and 0.01% sodium azide.

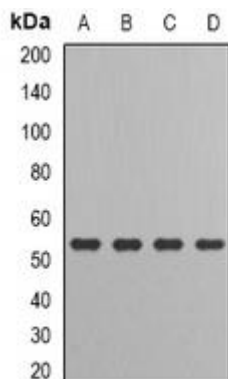
**SPECIES REACTIVITY:** Rat.  
Mouse.  
Human.

**STORAGE CONDITIONS:** Store at -20°C; For long term storage store at -20°C in small aliquots to prevent freeze-thaw cycles.

**APPLICATIONS AND USAGE:** Immunohistochemistry (IHC).  
Western Blotting.



IHC analysis of IRF-6 staining in human colon cancer tissue.



Western blot analysis of IRF-6 expression in HT29 (A); MCF7 (B); mouse kidney (C); rat liver (D) whole cell lysates.

*FOR RESEARCH USE ONLY!*



**RELATED PRODUCTS:**

IRF3, human recombinant (7323).  
IRF2, human recombinant (7322).  
IRF1, human recombinant (7321).  
IRF3 Antibody (3877).

***FOR RESEARCH USE ONLY! Not to be used on humans.***

