

Anti-KLF4 Antibody

CATALOG NO.: A1684

BACKGROUND DESCRIPTION: Transcription factor; can act both as activator and as repressor. Binds the 5'-CACCC-3' core sequence. Binds to the promoter region of its own gene and can activate its own transcription. Regulates the expression of key transcription factors during embryonic development. Plays an important role in maintaining embryonic stem cells, and in preventing their differentiation. Required for establishing the barrier function of the skin and for postnatal maturation and maintenance of the ocular surface. Involved in the differentiation of epithelial cells and may also function in skeletal and kidney development. Contributes to the down-regulation of p53/TP53 transcription.

ALTERNATE NAMES: EZF; GKLF; Krueppel-like factor 4; Epithelial zinc finger protein EZF; Gut-enriched krueppel-like factor.

AMOUNT: 100 µl.

HOST/ISOTYPE: Rabbit / IgG.

IMMUNOGEN: Recombinant full length protein of human KLF4.

PURIFICATION: Affinity purification.

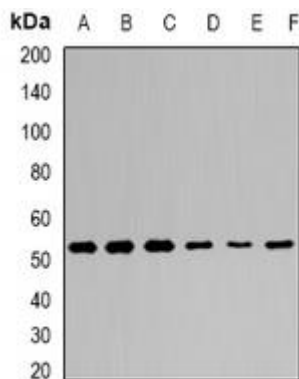
FORM: Liquid.

FORMULATION: In 0.42% Potassium phosphate; 0.87% Sodium chloride; pH 7.3; 30% glycerol; and 0.01% sodium azide.

SPECIES REACTIVITY: Rat.
 Mouse.
 Human.

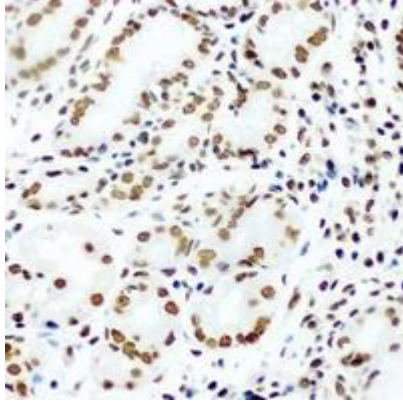
STORAGE CONDITIONS: Store at -20°C; For long term storage store at -20°C in small aliquots to prevent freeze-thaw cycles.

APPLICATIONS AND USAGE: Immunohistochemistry (IHC).
 Western Blotting.



Western blot analysis of KLF4 expression in Hela (A); BT474 (B); NIH3T3 (C); mouse brain (D); mouse spleen (E); rat testis (F) whole cell lysates..

FOR RESEARCH USE ONLY!



IHC analysis of KLF4 staining in human stomach cancer tissue.

KLF4 mAntibody (4G6E11) (5300)
KLF4 Antibody (3089)
KLF4 Blocking Peptide (3089BP)

FOR RESEARCH USE ONLY! Not to be used on humans.