

Anti-NODAL Antibody

CATALOG NO.: A1687-100

BACKGROUND DESCRIPTION: Essential for mesoderm formation and axial patterning during embryonic development.

ALTERNATE NAMES: Nodal homolog.

AMOUNT: 100 µl.

HOST/ISOTYPE: Rabbit / IgG.

IMMUNOGEN: KLH-conjugated synthetic peptide encompassing a sequence within the C-term region of human NODAL.

PURIFICATION: Affinity purification.

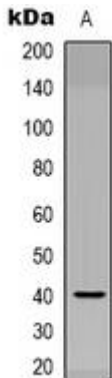
FORM: Liquid.

FORMULATION: In 0.42% Potassium phosphate; 0.87% Sodium chloride; pH 7.3; 30% glycerol; and 0.01% sodium azide.

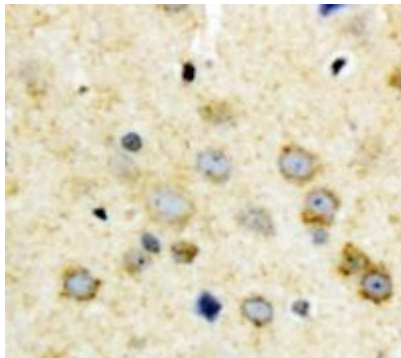
SPECIES REACTIVITY: Human.

STORAGE CONDITIONS: Store at -20°C; For long term storage store at -20°C in small aliquots to prevent freeze-thaw cycles.

APPLICATIONS AND USAGE: Immunohistochemistry (IHC).
Western Blotting.



Western blot analysis of NODAL expression in Hela (A) whole cell lysates.



IHC analysis of NODAL staining in human brain tissue.

FOR RESEARCH USE ONLY!



RELATED PRODUCTS:

Anti-Cripto 1 Antibody (Cat# A1672).
Anti-TGIF1 Antibody (Cat# A1667).
Anti-SOX-10 Antibody (IHC010) (Cat# A1544).

FOR RESEARCH USE ONLY! Not to be used on humans.

