

Anti-LRH1 Antibody

CATALOG NO.: A1688-100

BACKGROUND DESCRIPTION: Nuclear receptor that acts as a key metabolic sensor by regulating the expression of genes involved in bile acid synthesis, cholesterol homeostasis and triglyceride synthesis. Together with the oxysterol receptors NR1H3/LXR-alpha and NR1H2/LXR-beta, acts as an essential transcriptional regulator of lipid metabolism. Plays an anti-inflammatory role during the hepatic acute phase response by acting as a corepressor: inhibits the hepatic acute phase response by preventing dissociation of the N-Cor corepressor complex. Binds to the sequence element 5'-AACGACCGACCTTGAG-3' of the enhancer II of hepatitis B virus genes, a critical cis-element of their expression and regulation. May be responsible for the liver-specific activity of enhancer II, probably in combination with other hepatocyte transcription factors. Key regulator of cholesterol 7-alpha-hydroxylase gene (CYP7A) expression in liver. May also contribute to the regulation of pancreas-specific genes and play important roles in embryonic development.

ALTERNATE NAMES: B1F; CPF; FTF; Nuclear receptor subfamily 5 group A member 2; Alpha-1-fetoprotein transcription factor; B1-binding factor; hB1F; CYP7A promoter-binding factor; Hepatocytic transcription factor; Liver receptor homolog 1; LRH-1.

AMOUNT: 100 µl.

HOST/ISOTYPE: Rabbit / IgG.

IMMUNOGEN: Recombinant full length protein of human LRH-1.

PURIFICATION: Affinity purification.

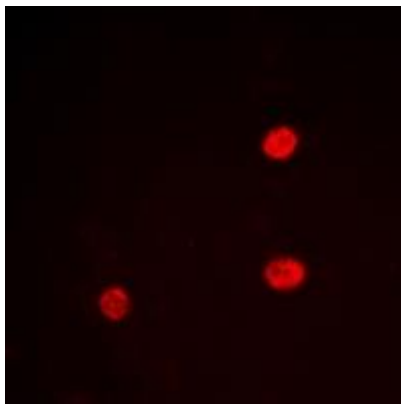
FORM: Liquid.

FORMULATION: In 0.42% Potassium phosphate; 0.87% Sodium chloride; pH 7.3; 30% glycerol; and 0.01% sodium azide.

SPECIES REACTIVITY: Rat.
Mouse.
Human.

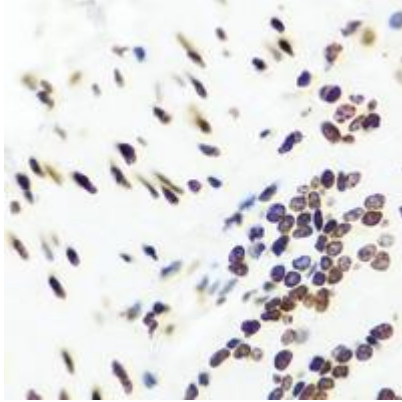
STORAGE CONDITIONS: Store at -20°C; For long term storage store at -20°C in small aliquots to prevent freeze-thaw cycles.

APPLICATIONS AND USAGE: Immunohistochemistry (IHC).
Immunofluorescence (IF).
Western Blotting.

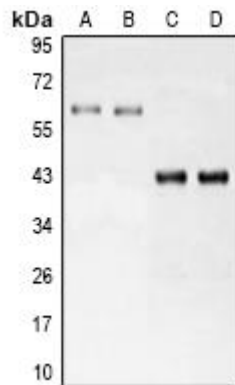


IF analysis of LRH-1 staining in HeLa cells.

FOR RESEARCH USE ONLY!



IHC analysis of LRH-1 staining in mouse lung tissue.



Western blot analysis of LRH-1 expression in MCF7 (A); Hela (B); mouse liver (C); rat liver (D) whole cell lysates..

RELATED PRODUCTS:

- Anti-IRF-6 Antibody (A1682).
- Anti-HOXB8 Antibody (A1680).
- Anti-LIN28B Antibody (A1685).
- Anti-MELK Antibody (A1686).

FOR RESEARCH USE ONLY! Not to be used on humans.