

# Anti-REX 1 Antibody

CATALOG NO.: A1691-100

**BACKGROUND DESCRIPTION:** Involved in the reprogramming of X-chromosome inactivation during the acquisition of pluripotency. Required for efficient elongation of TSIX, a non-coding RNA antisense to XIST. Binds DXPas34 enhancer within the TSIX promoter. Involved in ES cell self-renewal

**ALTERNATE NAMES:** Alternative Names: Expand ▼ hREX-1; Reduced Expression 1 Protein; Reduced expression protein 1; Rex-1; REX1; REX1 transcription factor; Zfp-42; Zfp42; ZFP42 zinc finger protein; ZFP42\_HUMAN; Zinc finger protein 42 homolog; Zinc finger protein 754; ZNF754.

**AMOUNT:** 100 µl.

**HOST/ISOTYPE:** Rabbit / IgG.

**IMMUNOGEN:** Peptide sequence around aa.10~14(K-T-R-H-Q) derived from Human Rex1 (ZFP42).

**MOLECULAR WEIGHT:** 35 kDa.

**PURIFICATION:** Affinity purified.

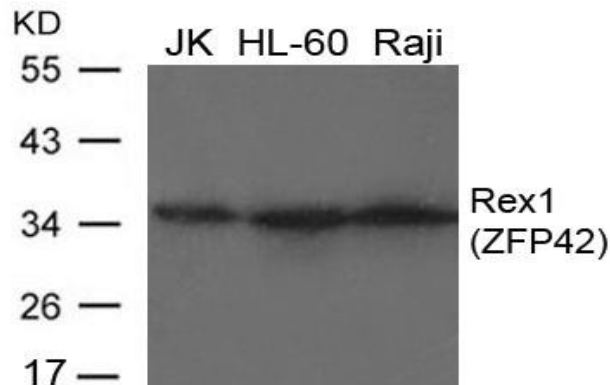
**FORM:** Liquid.

**FORMULATION:** In PBS pH 7.4, 150mM NaCl, 0.02% sodium azide and 50% glycerol.

**SPECIES REACTIVITY:** Human.

**STORAGE CONDITIONS:** Store at -20°C; For long term storage store at -20°C in small aliquots to prevent freeze-thaw cycles.

**APPLICATIONS AND USAGE:** Western Blotting.  
ELISA.



Western blot analysis of extracts from JK, HL-60 and Raji cells using Rex1 Antibody.

## RELATED PRODUCTS:

Anti-IRF-6 Antibody (A1682).  
 Anti-LRH1 Antibody (A1688).  
 Anti-LIN28B Antibody (A1685).  
 Anti-JMJD6 Antibody (A1683).

**FOR RESEARCH USE ONLY! Not to be used on humans.**