

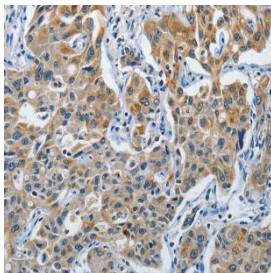
Anti-SGK1 Antibody

CATALOG NO.: A1693-100

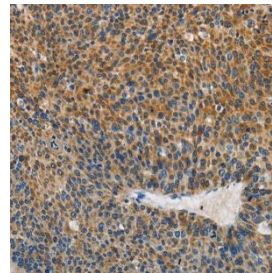
BACKGROUND DESCRIPTION: This gene encodes a serine/threonine protein kinase that plays an important role in cellular stress response. This kinase activates certain potassium, sodium, and chloride channels, suggesting an involvement in the regulation of processes such as cell survival, neuronal excitability, and renal sodium excretion. High levels of expression of this gene may contribute to conditions such as hypertension and diabetic nephropathy. Several alternatively spliced transcript variants encoding different isoforms have been noted for this gene

ALTERNATE NAMES:	Serine/threonine protein kinase SGK, Serine/threonine protein kinase Sgk1, Serine/threonine-protein kinase Sgk1, Serum and glucocorticoid regulated kinase, Serum/glucocorticoid regulated kinase 1, Serum/glucocorticoid regulated kinase, Serum/glucocorticoid-regulated kinase 1, SGK 1, SGK, SGK1, Sgk1 variant i3, SGK1
ANTIBODY TYPE:	Polyclonal
CONCENTRATION:	0.2 mg/mL
HOST/ISOTYPE:	Rabbit / IgG
IMMUNOGEN:	Synthetic peptide of human SGK1
PURIFICATION:	Affinity purification
FORM:	Liquid
FORMULATION:	PBS with 0.05% sodium azide, 50% glycerol, PH7.3
SPECIES REACTIVITY:	Rat, Mouse, Human
STORAGE CONDITIONS:	Store at -20°C. Avoid freeze-thaw cycles
APPLICATIONS AND USAGE:	ELISA, IHC 1:25-1:100

Note: This information is only intended as a guide. The optimal dilutions must be determined by the user



IHC analysis of Human lung cancer tissue using SGK1 Polyclonal Antibody



IHC analysis of Human liver cancer tissue using SGK1 Polyclonal Antibody

RELATED PRODUCTS:

Anti-NODAL Antibody (A1687)
 Anti-KLF4 Antibody (A1684)
 Anti-Nucleostemin Antibody (A1689)
 Anti-Sall4 Antibody (A1692)

FOR RESEARCH USE ONLY! Not to be used on humans.