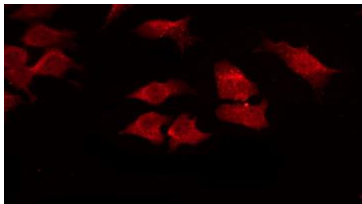


# Anti-SHB Antibody

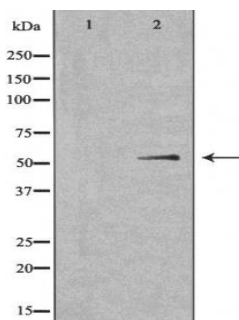
CATALOG NO.: A1694-100

**BACKGROUND DESCRIPTION:** Adapter protein which regulates several signal transduction cascades by linking activated receptors to downstream signaling components. May play a role in angiogenesis by regulating FGFR1, VEGFR2 and PDGFR signaling. May also play a role in T-cell antigen receptor/TCR signaling, interleukin-2 signaling, apoptosis and neuronal cells differentiation by mediating basic-FGF and NGF-induced signaling cascades. May also regulate IRS1 and IRS2 signaling in insulin-producing cells.

<b>ALTERNATE NAMES:</b>	SH2 domain containing adapter protein B; SH2 domain-containing adapter protein B; SHB (Src homology 2 domain containing) adaptor protein B; SHB adaptor protein (a Src homology 2 protein); SHB adaptor protein; Shb; SHB_HUMAN; Src homology 2 domain containing adaptor protein B; Src homology 2 protein.
<b>AMOUNT:</b>	100 µl.
<b>HOST/ISOTYPE:</b>	Rabbit / IgG.
<b>IMMUNOGEN:</b>	A synthesized peptide.
<b>MOLECULAR WEIGHT:</b>	55 KD.
<b>PURIFICATION:</b>	Affinity purification.
<b>FORM:</b>	Liquid.
<b>FORMULATION:</b>	In phosphate buffered saline , pH 7.4, 150mM NaCl, 0.02% sodium azide and 50% glycerol.
<b>SPECIES REACTIVITY:</b>	Mouse. Human.
<b>STORAGE CONDITIONS:</b>	Store at -20°C; For long term storage store at -20°C in small aliquots to prevent freeze-thaw cycles.
<b>APPLICATIONS AND USAGE:</b>	Immunocytochemistry (ICC). Western Blotting. ELISA.



IF/ICC staining of HuvEc cells using Anti-SHB antibody.



Western blot analysis of extracts from HuvEc cells, using SHB antibody.

*FOR RESEARCH USE ONLY!*



**RELATED PRODUCTS:**

Anti-Sall4 Antibody (A1692).  
Anti-SGK1 Antibody (A1693).

***FOR RESEARCH USE ONLY! Not to be used on humans.***

