

Anti-SHH Antibody

CATALOG NO.: A1695-100

BACKGROUND DESCRIPTION: This gene encodes a protein that is instrumental in patterning the early embryo. It has been implicated as the key inductive signal in patterning of the ventral neural tube, the anterior-posterior limb axis, and the ventral somites. Of three human proteins showing sequence and functional similarity to the sonic hedgehog protein of *Drosophila*, this protein is the most similar. The protein is made as a precursor that is autocatalytically cleaved; the N-terminal portion is soluble and contains the signalling activity while the C-terminal portion is involved in precursor processing. More importantly, the C-terminal product covalently attaches a cholesterol moiety to the N-terminal product, restricting the N-terminal product to the cell surface and preventing it from freely diffusing throughout the developing embryo. Defects in this protein or in its signalling pathway are a cause of holoprosencephaly (HPE), a disorder in which the developing forebrain fails to correctly separate into right and left hemispheres. HPE is manifested by facial deformities.

ALTERNATE NAMES: Sonic hedgehog protein, HHG-1, SHH .

AMOUNT: 100 µl.

HOST/ISOTYPE: Rabbit / IgG.

IMMUNOGEN: Synthetic peptide of human SHH.

PURIFICATION: Affinity purification.

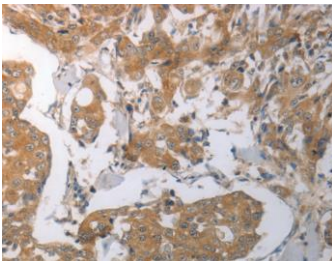
FORM: Liquid.

FORMULATION: In PBS with 0.05% sodium azide, 50% glycerol, PH7.3

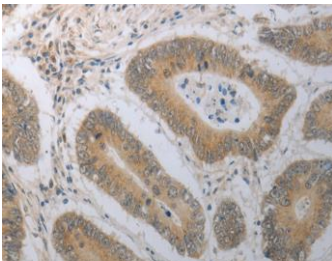
SPECIES REACTIVITY: Rat.
Mouse.
Human.

STORAGE CONDITIONS: Store at -20°C; For long term storage store at -20°C in small aliquots to prevent freeze-thaw cycles.

APPLICATIONS AND USAGE: Immunohistochemistry (IHC).
ELISA.



IHC staining of Human breast cancer tissue using SHH Polyclonal Antibody.



IHC staining of Human colon cancer tissue using SHH Polyclonal Antibody.

FOR RESEARCH USE ONLY!



RELATED PRODUCTS:

Anti-PUM2 Antibody (A1690).
Anti-SHB Antibody (A1694).
Anti-Sall4 Antibody (A1692).

FOR RESEARCH USE ONLY! Not to be used on humans.

