

Anti-ALB Antibody

CATALOG NO.: A1696-100

BACKGROUND DESCRIPTION: Albumin is a soluble, monomeric protein which comprises about one-half of the blood serum protein. Albumin functions primarily as a carrier protein for steroids, fatty acids, and thyroid hormones and plays a role in stabilizing extracellular fluid volume. Albumin is a globular unglycosylated serum protein of molecular weight 65,000. Albumin is synthesized in the liver as preproalbumin which has an N-terminal peptide that is removed before the nascent protein is released from the rough endoplasmic reticulum. The product, proalbumin, is in turn cleaved in the Golgi vesicles to produce the secreted albumin.

ALTERNATE NAMES: ALB, HSA, human serum albumin, serum albumin.

AMOUNT: 100 µl.

HOST/ISOTYPE: Rabbit / IgG.

IMMUNOGEN: Recombinant protein of human ALB.

PURIFICATION: Affinity purification.

FORM: Liquid.

FORMULATION: In PBS with 0.05% sodium azide, 50% glycerol, PH7.3

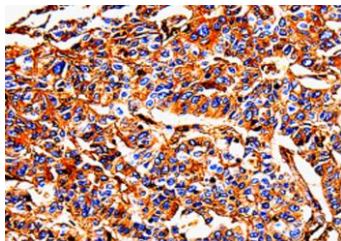
SPECIES REACTIVITY: Human.

STORAGE CONDITIONS: Store at -20°C; For long term storage store at -20°C in small aliquots to prevent freeze-thaw cycles.

APPLICATIONS AND USAGE: Immunohistochemistry (IHC).
Western Blotting.
ELISA.



Western Blot analysis of HepG2 cell using ALB Polyclonal Antibody.



IHC staining of Human liver cancer using ALB Polyclonal Antibody.

RELATED PRODUCTS:

Human Serum Albumin Antibody (6965).
Anti-Human Serum Albumin Antibody (2A1) (A1022).

FOR RESEARCH USE ONLY! Not for use in humans.