

Anti-Fibronectin Antibody

CATALOG NO.: A1697-100

BACKGROUND DESCRIPTION: This gene encodes fibronectin, a glycoprotein present in a soluble dimeric form in plasma, and in a dimeric or multimeric form at the cell surface and in extracellular matrix. Fibronectin is involved in cell adhesion and migration processes including embryogenesis, wound healing, blood coagulation, host defense, and metastasis. The gene has three regions subject to alternative splicing, with the potential to produce 20 different transcript variants. However, the full-length nature of some variants has not been determined

ALTERNATE NAMES: FN, Cold-insoluble globulin, CIG.

AMOUNT: 100 µl.

HOST/ISOTYPE: Rabbit / IgG.

IMMUNOGEN: Recombinant protein of human FN1.

PURIFICATION: Affinity purification.

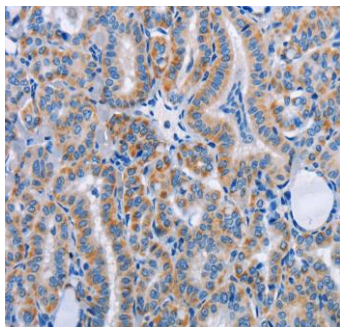
FORM: Liquid.

FORMULATION: In PBS with 0.05% sodium azide, 50% glycerol, PH7.3

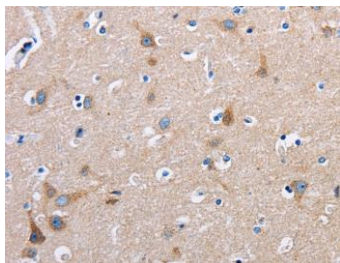
SPECIES REACTIVITY: Rat.
Mouse.
Human.

STORAGE CONDITIONS: Store at -20°C; For long term storage store at -20°C in small aliquots to prevent freeze-thaw cycles.

APPLICATIONS AND USAGE: Immunohistochemistry (IHC).
ELISA.



IHC staining of Human thyroid cancer tissue using FN1 Polyclonal Antibody.



IHC staining of Human brain tissue using FN1 Polyclonal Antibody.

FOR RESEARCH USE ONLY!

RELATED PRODUCTS:

Fibronectin Antibody (3630).
Fibronectin (human) ELISA Kit (K3631).

FOR RESEARCH USE ONLY! Not to be used on humans.