

# Anti-Ubiquitin Antibody

CATALOG NO.: A1702-100

**BACKGROUND DESCRIPTION:** This gene encodes ubiquitin, one of the most conserved proteins known. Ubiquitin has a major role in targeting cellular proteins for degradation by the 26S proteasome. It is also involved in the maintenance of chromatin structure, the regulation of gene expression, and the stress response. Ubiquitin is synthesized as a precursor protein consisting of either polyubiquitin chains or a single ubiquitin moiety fused to an unrelated protein. This gene consists of three direct repeats of the ubiquitin coding sequence with no spacer sequence. Consequently, the protein is expressed as a polyubiquitin precursor with a final amino acid after the last repeat. An aberrant form of this protein has been detected in patients with Alzheimer's disease and Down syndrome. Pseudogenes of this gene are located on chromosomes 1, 2, 13, and 17. Alternative splicing results in multiple transcript variants.

**ALTERNATE NAMES:** Polyubiquitin-B, UBB.

**AMOUNT:** 100 µl.

**HOST/ISOTYPE:** Rabbit / IgG.

**IMMUNOGEN:** Recombinant protein of human UBB.

**PURIFICATION:** Affinity purified.

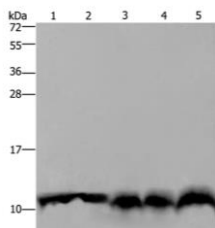
**FORM:** Liquid.

**FORMULATION:** In PBS with 0.05% sodium azide, 50% glycerol, pH 7.3

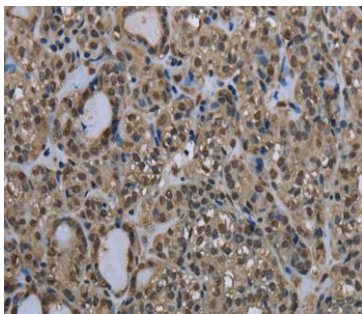
**SPECIES REACTIVITY:** Rat.  
Mouse.  
Human.

**STORAGE CONDITIONS:** Store at -20°C; For long term storage store at -20°C in small aliquots to prevent freeze-thaw cycles.

**APPLICATIONS AND USAGE:** Immunohistochemistry (IHC). 1:25- 1:100  
Western Blotting. 1:500-1:2000

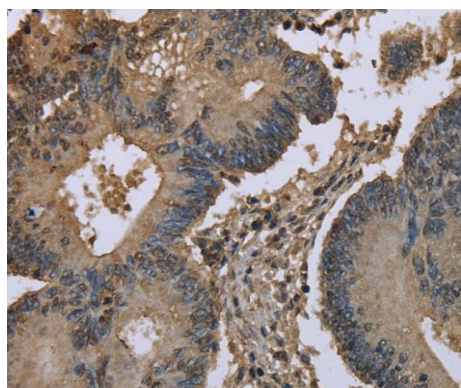


Western Blot analysis of Mouse pancreas tissue, Hela cell and Mouse liver tissue, A549 and 293T cell using UBB Polyclonal Antibody.



IHC staining of Human thyroid cancer using UBB Polyclonal Antibody.

*FOR RESEARCH USE ONLY!*



IHC staining of Human colon cancer using UBB Polyclonal Antibody.

**RELATED PRODUCTS:**

Ubiquitin-Biotinylated (all lysines unmodified) (7551).  
Ubiquitin Aldehyde, human recombinant (4845).  
Ubiquitin, human recombinant (4841).

***FOR RESEARCH USE ONLY! Not to be used on humans.***