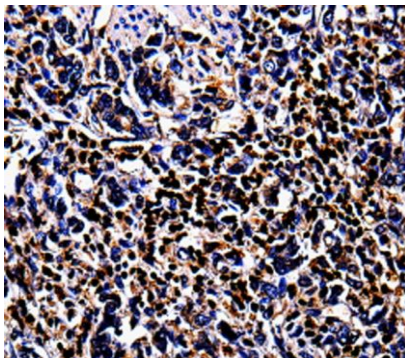


Anti-S100A4 Antibody

CATALOG NO.: A1704-100

BACKGROUND DESCRIPTION: The protein encoded by this gene is a member of the S100 family of proteins containing 2 EF-hand calcium-binding motifs. S100 proteins are localized in the cytoplasm and/or nucleus of a wide range of cells, and involved in the regulation of a number of cellular processes such as cell cycle progression and differentiation. S100 genes include at least 13 members which are located as a cluster on chromosome 1q21. This protein may function in motility, invasion, and tubulin polymerization. Chromosomal rearrangements and altered expression of this gene have been implicated in tumor metastasis. Multiple alternatively spliced variants, encoding the same protein, have been identified.

ALTERNATE NAMES:	CAPL, MTS1. Calvasculin, Metastasin, Placental calcium-binding protein, Protein Mts1, Protein Mts1, S100 calcium-binding protein A4.
AMOUNT:	100 µl.
HOST/ISOTYPE:	Rabbit / IgG.
IMMUNOGEN:	Recombinant protein of human S100A4.
PURIFICATION:	Affinity purified.
FORM:	Liquid.
FORMULATION:	In PBS with 0.05% sodium azide, 50% glycerol, pH 7.3
SPECIES REACTIVITY:	Rat. Mouse. Human.
STORAGE CONDITIONS:	Store at -20°C; For long term storage store at -20°C in small aliquots to prevent freeze-thaw cycles.
APPLICATIONS AND USAGE:	Immunohistochemistry (IHC). 1:100-1:200 ELISA.



IHC staining of Human stomach cancer tissue using S100A4 Polyclonal Antibody.

RELATED PRODUCTS:

Anti-TXNRD2 Antibody (3F2-E12-F10) (A1324).
Anti-WDR77 Antibody (8A10-C10-E8) (A1340).
Anti-SMC1A Antibody (4C5-C8-A11) (A1337).

FOR RESEARCH USE ONLY! Not to be used on humans.