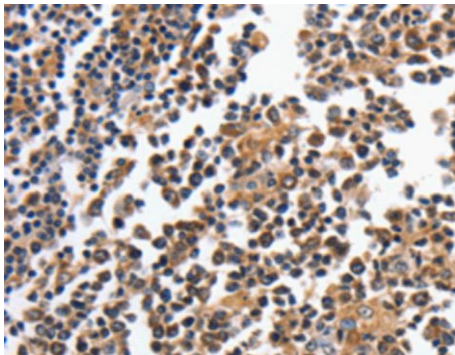


Anti-MAGEA4 Antibody

CATALOG NO.: A1705-100

BACKGROUND DESCRIPTION: This gene is a member of the MAGEA gene family. The members of this family encode proteins with 50 to 80% sequence identity to each other. The promoters and first exons of the MAGEA genes show considerable variability, suggesting that the existence of this gene family enables the same function to be expressed under different transcriptional controls. The MAGEA genes are clustered at chromosomal location Xq28. They have been implicated in some hereditary disorders, such as dyskeratosis congenita. At least four variants encoding the same protein have been found for this gene.

ALTERNATE NAMES:	Melanoma-associated antigen 4, Cancer/testis antigen 1.4, CT1.4, MAGE-4 antigen, MAGE-41 antigen, MAGE-X2 antigen,
AMOUNT:	100 µl.
HOST/ISOTYPE:	Rabbit / IgG.
IMMUNOGEN:	Recombinant protein of human MAGEA4.
PURIFICATION:	Affinity purification.
FORM:	Liquid.
FORMULATION:	In PBS with 0.05% sodium azide, 50% glycerol, pH7.3
SPECIES REACTIVITY:	Human.
STORAGE CONDITIONS:	Store at -20°C; For long term storage store at -20°C in small aliquots to prevent freeze-thaw cycles.
APPLICATIONS AND USAGE:	Immunohistochemistry (IHC). 1:25-1:100 ELISA.



IHC staining of Human tonsil tissue using MAGEA4 Polyclonal Antibody.

RELATED PRODUCTS:

Anti-PD-1 Antibody (A1384).
Anti-PD-L1 Antibody (IHC411) (A1549).
Anti-PD-L1 (Atezolizumab), Humanized Antibody (A1305).

FOR RESEARCH USE ONLY! Not to be used on humans.