

Anti-CK-13 Antibody

CATALOG NO.: A1707

BACKGROUND DESCRIPTION: The protein encoded by this gene is a member of the keratin gene family. The keratins are intermediate filament proteins responsible for the structural integrity of epithelial cells and are subdivided into cytokeratins and hair keratins. Most of the type I cytokeratins consist of acidic proteins which are arranged in pairs of heterotypic keratin chains. This type I cytokeratin is paired with keratin 4 and expressed in the suprabasal layers of non-cornified stratified epithelia. Mutations in this gene and keratin 4 have been associated with the autosomal dominant disorder White Sponge Nevus. The type I cytokeratins are clustered in a region of chromosome 17q21.2. Alternative splicing of this gene results in multiple transcript variants; however, not all variants have been described.

ALTERNATE NAMES: Cytokeratin-13, CK-13 Keratin-13, K13, KRT13, Keratin, type I cytoskeletal 13.

AMOUNT: 100 µl.

HOST/ISOTYPE: Rabbit / IgG.

IMMUNOGEN: Recombinant protein of human KRT13.

PURIFICATION: Affinity purified.

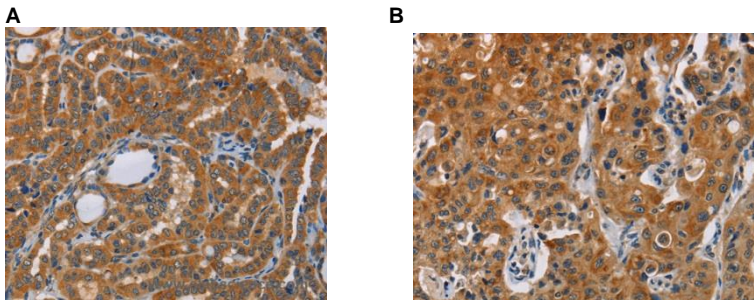
FORM: Liquid.

FORMULATION: In PBS with 0.05% sodium azide, 50% glycerol, pH7.3

SPECIES REACTIVITY: Rat.
 Mouse.
 Human.

STORAGE CONDITIONS: Store at -20°C; For long term storage store at -20°C in small aliquots to prevent freeze-thaw cycles.

APPLICATIONS AND USAGE: Immunohistochemistry (IHC).
 ELISA.



A. IHC staining of Human thyroid cancer tissue using CK-13 Polyclonal Antibody.
 B. HC staining of Human lung cancer tissue using CK-13 Polyclonal Antibody.

RELATED PRODUCTS:

Anti- Ki-67 Antibody (IHC067) (A1521).
 Anti-Ki67 Rabbit Monoclonal Antibody (A1135).
 Anti-Cdc20 Antibody (CDC20/1102) (A1572).
 Anti-TP53INP2 Antibody (A1169).

FOR RESEARCH USE ONLY! Not to be used on humans.