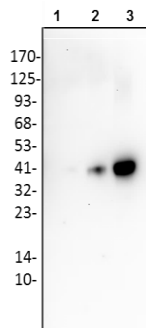


Anti-Cathepsin E Antibody

CATALOG NO.: A1709-100
A1709-30T

BACKGROUND DESCRIPTION: Cathepsin E (EC: 3.4.23.34) (CTSE) is an intracellular gastric aspartyl protease. It was originally identified as a cathepsin D-like acid protease. It is active in acidic conditions in a pH range from 2.5 to 5.5. In vitro experiments have identified several CTSE substrates including insulin beta chain, neurokinin, and FGF. Although the function of CTSE is not completely understood, it has been implicated in several physiological and pathological processes. CTSE is required for antigen presentation on class II MHC molecules. CTSE-deficient macrophages show abnormalities such as autophagy. Like many other cathepsins, CTSE has emerged as a therapy target for cancers, such as pancreatic ductal adenocarcinoma (PDAC). In addition to PDAC, CTSE is also overexpressed in gastric carcinomas and cervical and lung adenocarcinomas. The possible involvement of CTSE in neurodegeneration has also been reported. This protease has a specificity similar to that of pepsin A and cathepsin D. It is found in highest concentration in the surface of epithelial mucus-producing cells of the stomach. It is found in more than half of gastric cancers.

ALTERNATE NAMES:	Cathepsin E form I, Cathepsin E form II, CTSE
AMOUNT:	30 µg. 100 µg.
HOST/ISOTYPE:	Rabbit / IgG.
IMMUNOGEN:	Human recombinant Cathepsin E (Cat. No. 7842).
PURIFICATION:	Affinity purified.
FORM:	Liquid.
FORMULATION:	In PBS, 30% glycerol, 0.5% BSA, 5 mM EDTA and 0.03% proclin
SPECIES REACTIVITY:	Human.
STORAGE CONDITIONS:	Store at -20°C; For long term storage store at -20°C in small aliquots to prevent freeze-thaw cycles.
APPLICATIONS AND USAGE:	Western Blotting. 1-4 µg



Western blot analysis of recombinant Cathepsin E using Anti-Cathepsin E antibody.

Lane 1: Recombinant Cathepsin E 1 ng
Lane 2: Recombinant Cathepsin E 10 ng
Lane 3: Recombinant Cathepsin E 50 ng

RELATED PRODUCTS:

Cathepsin K Antibody (3368).
Cathepsin S Antibody (6686).
Cathepsin L (Cleaved) Antibody (3741).
Cathepsin L Antibody (6669).

FOR RESEARCH USE ONLY! Not to be used on humans.