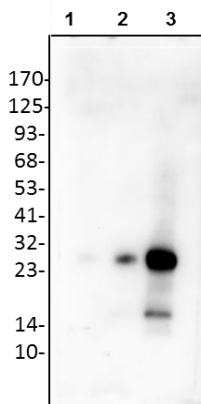


# Anti-Enterokinase Antibody

CATALOG NO.: A1710-100  
A1710-30T

**BACKGROUND DESCRIPTION:** Enterokinase (EC 3.4.21.9) is a serine protease involved in the activation of trypsinogen to trypsin, which in turn results in the activation of various digestive enzymes. It recognizes a highly specific amino acid sequence 'DDDDK' and cleaves after the lysine residue. High specific activity of enterokinase has been utilized in cleaving a variety of native or fusion protein tags containing the above recognition motif.

<b>ALTERNATE NAMES:</b>	Enteropeptidase, Serine protease 7, Transmembrane protease serine 15, TMPRSS15, ENTK, PRSS7.
<b>AMOUNT:</b>	30 µg. 100 µg.
<b>HOST/ISOTYPE:</b>	Rabbit / IgG.
<b>IMMUNOGEN:</b>	Recombinant human Enterokinase light chain (Cat. No. 7529).
<b>PURIFICATION:</b>	Affinity purification.
<b>FORM:</b>	Liquid.
<b>FORMULATION:</b>	In PBS, 30% glycerol, 0.5% BSA, 5 mM EDTA and 0.03% proclin
<b>SPECIES REACTIVITY:</b>	Human.
<b>STORAGE CONDITIONS:</b>	Store at -20°C; For long term storage store at -20°C in small aliquots to prevent freeze-thaw cycles..
<b>APPLICATIONS AND USAGE:</b>	Western Blotting. 1-4 µg



Western blot analysis of recombinant human Enterokinase using anti-Enterokinase antibody.

Lane 1: Recombinant human Enterokinase light chain 1 ng.  
Lane 2: Recombinant human Enterokinase light chain 10 ng.  
Lane 3: Recombinant human Enterokinase light chain 50 ng.

## RELATED PRODUCTS:

Enterokinase Inhibitor Screening Kit (K759).  
Enterokinase, human recombinant, lyophilized (7136).  
Enterokinase Activity Fluorometric Assay Kit (K758).  
Enterokinase, Light Chain, human recombinant (7529).

**FOR RESEARCH USE ONLY! Not to be used on humans.**