

Phospho-VAV3 (Tyr173) Antibody

CATALOG NO.: A1713-100 100 µl.

BACKGROUND DESCRIPTION: Exchange factor for GTP-binding proteins RhoA, RhoG and, to a lesser extent, Rac1. Binds physically to the nucleotide-free states of those GTPases. Plays an important role in angiogenesis. Its recruitment by phosphorylated EPHA2 is critical for EFNA1-induced RAC1 GTPase activation and vascular endothelial cell migration and assembly (By similarity). May be important for integrin-mediated signaling, at least in some cell types. In osteoclasts, along with SYK tyrosine kinase, required for signaling through integrin alpha-v/beta-1 (ITAGV-ITGB1), a crucial event for osteoclast proper cytoskeleton organization and function. This signaling pathway involves RAC1, but not RHO, activation. Necessary for proper wound healing. In the course of wound healing, required for the phagocytotic cup formation preceding macrophage phagocytosis of apoptotic neutrophils. Responsible for integrin beta-2 (ITGB2)-mediated macrophage adhesion and, to a lesser extent, contributes to beta-3 (ITGB3)-mediated adhesion. Does not affect integrin beta-1 (ITGB1)-mediated adhesion

ALTERNATE NAMES: Guanine nucleotide exchange factor VAV3, VAV-3.

ANTIBODY TYPE: Polyclonal

CONCENTRATION: 1mg/ml

HOST/ISOTYPE: Rabbit / IgG.

IMMUNOGEN: A synthesized peptide derived from human VAV3 around the phosphorylation site of Tyrosine 173..

MOLECULAR WEIGHT: 100 KDa

PURIFICATION: Affinity purified.

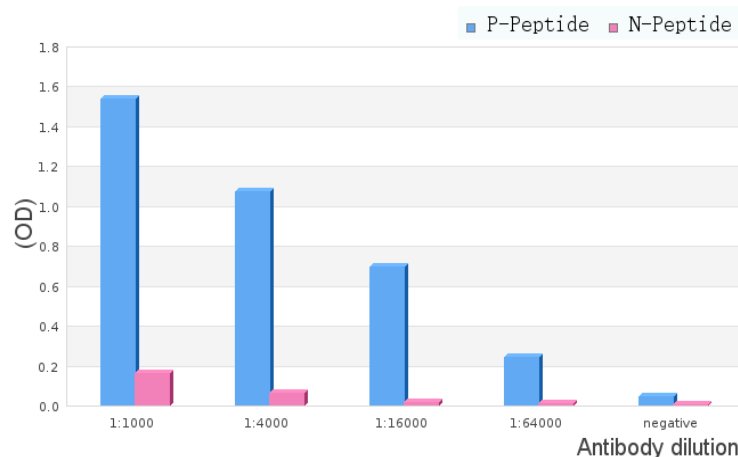
FORM: Liquid.

FORMULATION: In phosphate buffered saline , pH 7.4, 150mM NaCl, 0.02% sodium azide and 50% glycerol.

SPECIES REACTIVITY: Mouse.
Human.

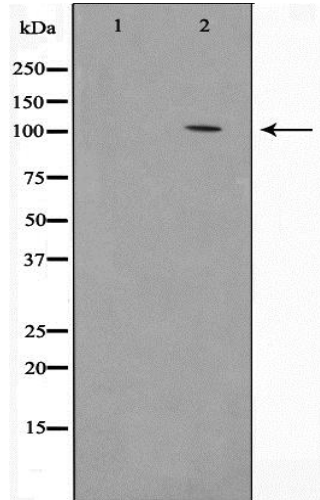
STORAGE CONDITIONS: Store at -20°C; For long term storage store at -20°C in small aliquots to prevent freeze-thaw cycles.

APPLICATIONS AND USAGE: WB 1:500-1:2000, ELISA (peptide) 1:20000-1:40000.



ELISA analysis of Phospho-VAV3 (Tyr173) showing specificity to Phospho-VAV3 (Tyr173) peptide.

Peptides concentration: 1ug/ml.
P-peptide: phospho-peptide;
N-peptide: non-phospho-peptide.



Western blot analysis on JK cell lysate using Phospho-VAV3 (Tyr173) Antibody, The lane on the left is treated with the antigen-specific peptide.

RELATED PRODUCTS:

Phospho-AMPK α 1 (Ser496) Antibody (A1247).
Phospho-Akt1 (Ser246) Antibody (A1245).
Phospho CREB (Ser129) Antibody (A1222).

FOR RESEARCH USE ONLY! Not to be used on humans.