

# Phospho-HS1 (Tyr378) Antibody

**CATALOG NO.:** A1715-100 100 µl.

**BACKGROUND DESCRIPTION:** Substrate of the antigen receptor-coupled tyrosine kinase. Plays a role in antigen receptor signaling for both clonal expansion and deletion in lymphoid cells. May also be involved in the regulation of gene expression.

**ALTERNATE NAMES:** Hematopoietic lineage cell-specific protein, Hematopoietic cell-specific LYN substrate 1, LckBP1, p75, HCLS1.

**ANTIBODY TYPE:** Polyclonal

**CONCENTRATION:** 1mg/ml

**HOST/ISOTYPE:** Rabbit / IgG.

**IMMUNOGEN:** A synthesized peptide derived from human HS1 around the phosphorylation site of Tyrosine 378..

**MOLECULAR WEIGHT:** 78kDa.

**PURIFICATION:** The antibody is from purified rabbit serum by affinity purification via sequential chromatography on phospho- and non-phospho-peptide affinity columns..

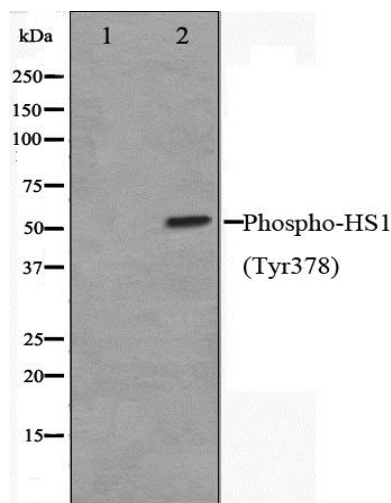
**FORM:** Liquid.

**FORMULATION:** In phosphate buffered saline , pH 7.4, 150mM NaCl, 0.02% sodium azide and 50% glycerol

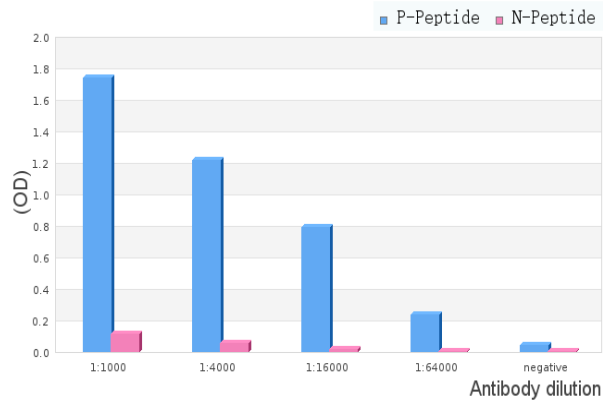
**SPECIES REACTIVITY:** Human.

**STORAGE CONDITIONS:** Store at -20°C; For long term storage store at -20°C in small aliquots to prevent freeze-thaw cycles.

**APPLICATIONS AND USAGE:** WB 1:500-1:2000, ELISA (peptide) 1:20000-1:40000.



Western blot analysis on HepG2 cell lysate using Phospho-HS1(Tyr378) Antibody, The lane on the left is treated with the antigen-specific peptide..



ELISA analysis of Phospho-HS1(Tyr378) Antibody showing specificity to Phospho-HS1(Tyr378) peptide.

Peptides concentration: 1ug/ml.

P-peptide: phospho-peptide; N-peptide: non-phospho-peptide.

#### RELATED PRODUCTS:

Phospho-Cofilin (Ser3) Antibody (A1267).  
 Phospho-DDX3X (Thr322) Antibody (A1155).  
 Phospho-Chk2 (Ser516) Antibody (A1264).  
 Phospho-FoxO4/AFX Antibody (3270).

**FOR RESEARCH USE ONLY! Not to be used on humans.**