

Phospho-MAPKAPK5 (Thr182) Antibody

CATALOG NO.: A1716-100 100 µl.

BACKGROUND DESCRIPTION: The protein encoded by this gene is a member of the serine/threonine kinase family. In response to cellular stress and proinflammatory cytokines, this kinase is activated through its phosphorylation by MAP kinases including MAPK1/ERK, MAPK14/p38-alpha, and MAPK11/p38-beta. In vitro, this kinase phosphorylates heat shock protein HSP27 at its physiologically relevant sites. Two alternately spliced transcript variants of this gene encoding distinct isoforms have been reported.

ALTERNATE NAMES: MAP kinase-activated protein kinase 5; MAPK-activated protein kinase 5; MAPK5_HUMAN; MAPKAP kinase 5; MAPKAPK-5; MAPKAPK5; Mitogen activated protein kinase activated protein kinase 5; p38-regulated/activated protein kinase; PRAK.

ANTIBODY TYPE: Polyclonal

CONCENTRATION: 1mg/ml

HOST/ISOTYPE: Rabbit / IgG.

IMMUNOGEN: A synthesized peptide derived from human MAPKAPK5 around the phosphorylation site of Threonine 182.

MOLECULAR WEIGHT: 60kDa.

PURIFICATION: Affinity purified.

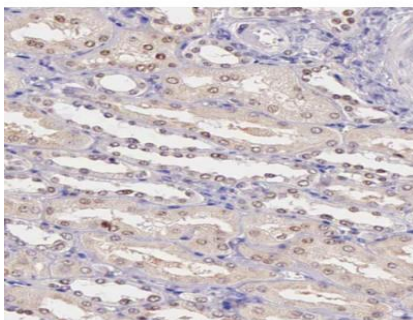
FORM: Liquid.

FORMULATION: In phosphate buffered saline , pH 7.4, 150mM NaCl, 0.02% sodium azide and 50% glycerol.

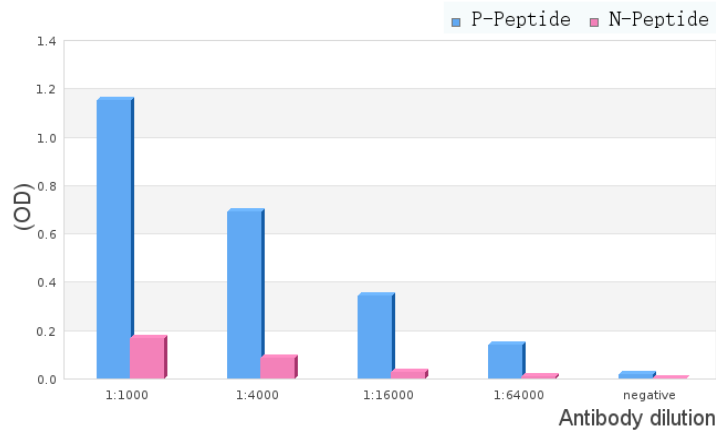
SPECIES REACTIVITY: Mouse.
Human.

STORAGE CONDITIONS: Store at -20°C; For long term storage store at -20°C in small aliquots to prevent freeze-thaw cycles.

APPLICATIONS AND USAGE: WB 1:500-1:2000 IHC 1:50-1:200, IF/ICC 1:100-1:500, ELISA (peptide) 1:20000-1:40000.



IHC staining human kidney tissue sections using Phospho-MAPKAPK5 (Thr182) Antibody.



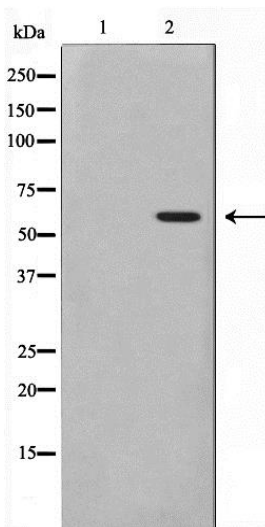
ELISA analysis of Phospho-MAPKAPK5 (Thr182) Antibody showing specificity to Phospho-MAPKAPK5 (Thr182) peptide.

Peptides concentration: 1ug/ml.

P-peptide: phospho-peptide;
N-peptide: non-phospho-peptide.



IF/ ICC staining of K562 cells using Phospho-MAPKAPK5 (Thr182) Antibody.



Western blot analysis on K562 cell lysate using Phospho-MAPKAPK5(Thr182) Antibody, The lane on the left is treated with the antigen-specific peptide.

RELATED PRODUCTS:

- Anti-p38 MAPK Rabbit Monoclonal Antibody (A1125).
- Anti-Phospho-p38 MAPK (Thr180/Tyr182) Rabbit Monoclonal Antibody (A1127).
- Phospho-p38 MAPK Antibody (3438).

FOR RESEARCH USE ONLY! Not to be used on humans.