

Phospho-Gab2 (Tyr452) Antibody

CATALOG NO.: A1717-100 100 µl.

BACKGROUND DESCRIPTION: This gene is a member of the GRB2-associated binding protein (GAB) gene family and is similar to the GAB1 gene. These proteins contain pleckstrin homology (PH) domain, and bind SHP2 tyrosine phosphatase and GRB2 adapter protein. They act as adapters for transmitting various signals in response to stimuli through cytokine and growth factor receptors, and T- and B-cell antigen receptors. The protein encoded by this gene is the principal activator of phosphatidylinositol-3 kinase in response to activation of the high affinity IgE receptor. Two alternatively spliced transcripts encoding different isoforms have been described for this gene.

ALTERNATE NAMES: GRB2-associated-binding protein 2, GRB2-associated binder 2, Growth factor receptor bound protein 2-associated protein 2, pp100, KIAA0571, GAB2.

ANTIBODY TYPE: Polyclonal

CONCENTRATION: 1mg/ml

HOST/ISOTYPE: Rabbit / IgG.

IMMUNOGEN: A synthesized peptide derived from human Gab2 around the phosphorylation site of Tyrosine 452.

MOLECULAR WEIGHT: 75 kDa.

PURIFICATION: Affinity purified.

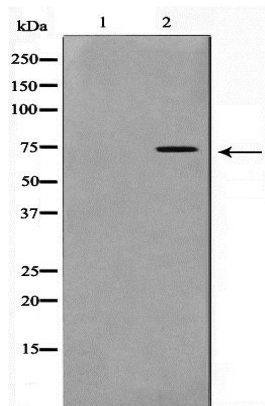
FORM: Liquid.

FORMULATION: In phosphate buffered saline , pH 7.4, 150 mM NaCl, 0.02% sodium azide and 50% glycerol. Store at -20 °C.

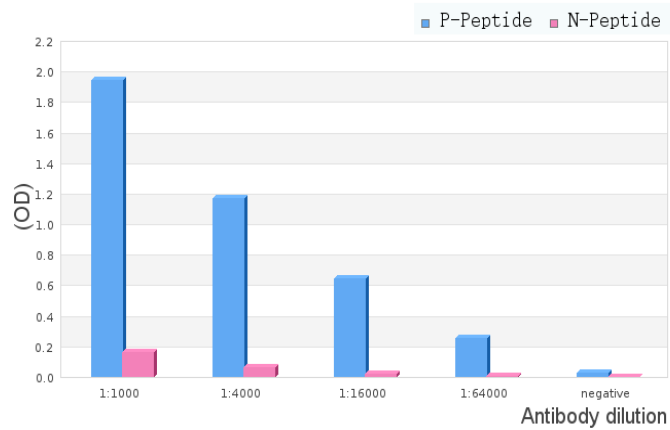
SPECIES REACTIVITY: Rat.
 Mouse.
 Human.

STORAGE CONDITIONS: Store at -20°C; For long term storage store at -20°C in small aliquots to prevent freeze-thaw cycles.

APPLICATIONS AND USAGE: WB 1:500-1:2000, ELISA (peptide) 1:20000-1:40000.



Western blot analysis on HT29 cell lysate using Phospho-Gab2 (Tyr452) Antibody, The lane on the left is treated with the antigen-specific peptide.



ELISA analysis of Phospho-Gab2 (Tyr452) Antibody showing specificity to Phospho-Gab2 (Tyr452) peptide.

Peptides concentration: 1ug/ml.

P-peptide: phospho-peptide;
 N-peptide: non-phospho-peptide.

RELATED PRODUCTS:

Phospho-AP-1 (Ser63) Antibody (A1249).
 Phospho-BID (Ser78) Antibody (A1152).
 Phospho-ALIX Antibody (A1044).
 Phospho-ASK 1 (Ser83) Antibody (A1251).

FOR RESEARCH USE ONLY! Not to be used on humans.