

Phospho-EPS15 (Tyr849) Antibody

CATALOG NO.: A1718-100 100 µl.

BACKGROUND DESCRIPTION: Involved in cell growth regulation. May be involved in the regulation of mitogenic signals and control of cell proliferation. Involved in the internalization of ligand-inducible receptors of the receptor tyrosine kinase (RTK) type, in particular EGFR. Plays a role in the assembly of clathrin-coated pits (CCPs). Acts as a clathrin adapter required for post-Golgi trafficking. Seems to be involved in CCPs maturation including invagination or budding. Involved in endocytosis of integrin beta-1 (ITGB1) and transferrin receptor (TFR); internalization of ITGB1 as DAB2-dependent cargo but not TFR seems to require association with DAB2.

ALTERNATE NAMES: Epidermal growth factor receptor substrate 15, Protein Eps15, Protein AF-1p, EPS15, AF1P.

ANTIBODY TYPE: Polyclonal

CONCENTRATION: 1mg/ml

HOST/ISOTYPE: Rabbit / IgG.

IMMUNOGEN: A synthesized peptide derived from human EPS15 around the phosphorylation site of Tyrosine 849..

MOLECULAR WEIGHT: 98 kDa.

PURIFICATION: Affinity purified.

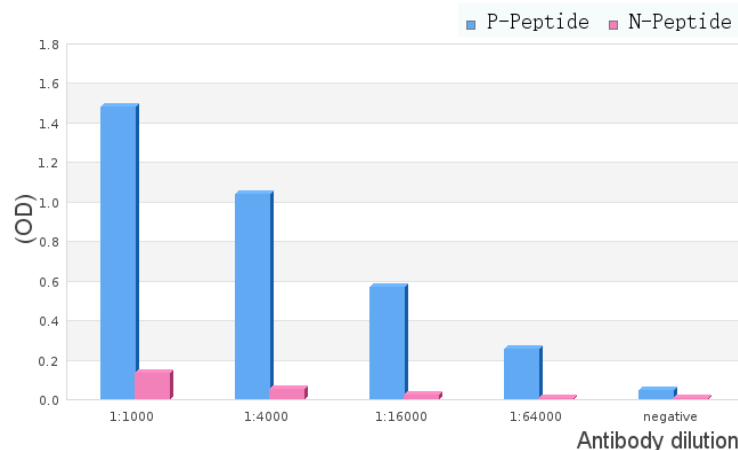
FORM: Liquid.

FORMULATION: In phosphate buffered saline , pH 7.4, 150mM NaCl, 0.02% sodium azide and 50% glycerol

SPECIES REACTIVITY: Rat.
 Mouse.
 Human.

STORAGE CONDITIONS: Store at -20°C; For long term storage store at -20°C in small aliquots to prevent freeze-thaw cycles.

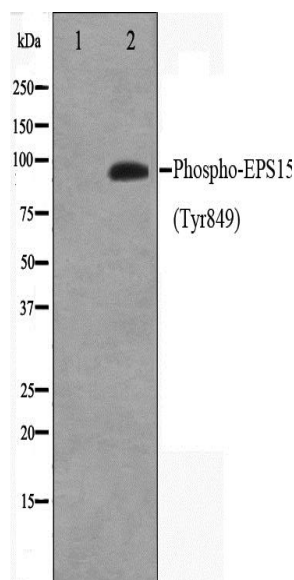
APPLICATIONS AND USAGE: WB 1:500-1:2000, IF/ICC 1:100-1:500, ELISA (peptide) 1:20000-1:40000.



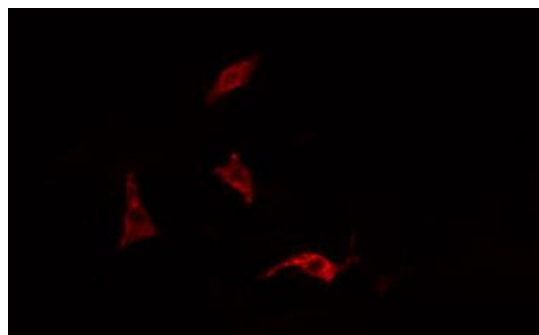
ELISA analysis of Phospho-EPS15 (Tyr849) Antibody showing specificity to Phospho-EPS15 (Tyr849) peptide.

Peptides concentration: 1µg/ml.

P-peptide: phospho-peptide;
 N-peptide: non-phospho-peptide.



Western blot analysis on HepG2 cell lysate using Phospho-EPS15 (Tyr849) Antibody. The lane on the left is treated with the antigen-specific peptide.



IF/ICC staining of HepG2 cells using Phospho-EPS15 (Tyr849) Antibody.

RELATED PRODUCTS:

- Phospho-AMPK α 1 (Ser496) Antibody (A1247).
- Phospho-AP-1 (Ser63) Antibody (A1249).
- Phospho-ASK1 (Ser83) Antibody (A1241).

FOR RESEARCH USE ONLY! Not to be used on humans.