

# Phospho-BRCA1 (Ser1457) Antibody

CATALOG NO.: A1719-100 100 µl.

**BACKGROUND DESCRIPTION:** E3 ubiquitin-protein ligase that specifically mediates the formation of 'Lys-6'-linked polyubiquitin chains and plays a central role in DNA repair by facilitating cellular responses to DNA damage. It is unclear whether it also mediates the formation of other types of polyubiquitin chains. The E3 ubiquitin-protein ligase activity is required for its tumor suppressor function. The BRCA1-BARD1 heterodimer coordinates a diverse range of cellular pathways such as DNA damage repair, ubiquitination and transcriptional regulation to maintain genomic stability. Regulates centrosomal microtubule nucleation. Required for normal cell cycle progression from G2 to mitosis. Required for appropriate cell cycle arrests after ionizing irradiation in both the S-phase and the G2 phase of the cell cycle. Involved in transcriptional regulation of P21 in response to DNA damage. Required for FANCD2 targeting to sites of DNA damage.

**ALTERNATE NAMES:** Breast cancer type 1 susceptibility protein, RING finger protein 53, RING-type E3 ubiquitin transferase BRCA1, RNF53.

**ANTIBODY TYPE:** Polyclonal

**CONCENTRATION:** 1mg/ml

**HOST/ISOTYPE:** Rabbit / IgG.

**IMMUNOGEN:** A synthesized peptide derived from human BRCA1 around the phosphorylation site of Sersine 1457.

**MOLECULAR WEIGHT:** 220 kDa.

**PURIFICATION:** Affinity purified.

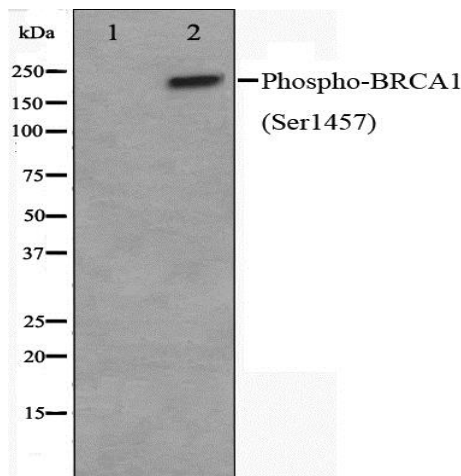
**FORM:** Liquid.

**FORMULATION:** In phosphate buffered saline, pH 7.4, 150mM NaCl, 0.02% sodium azide and 50% glycerol.

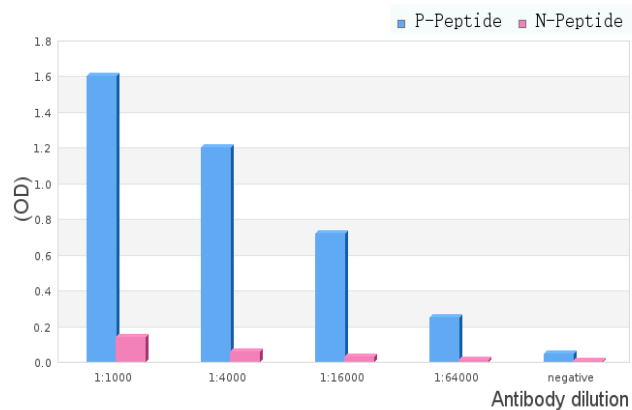
**SPECIES REACTIVITY:** Human.

**STORAGE CONDITIONS:** Store at -20°C; For long term storage store at -20°C in small aliquots to prevent freeze-thaw cycles.

**APPLICATIONS AND USAGE:** WB 1:500-1:2000, ELISA (peptide) 1:20000-1:40000.



Western blot analysis on 293 cell lysate using Phospho-BRCA1 (Ser1457) Antibody, The lane on the left is treated with the antigen-specific peptide.



ELISA analysis of Phospho-BRCA1 (Ser1457) Antibody showing specificity to Phospho-BRCA1 (Ser1457) peptide. Peptides concentration: 1ug/ml.

P-peptide: phospho-peptide;  
N-peptide: non-phospho-peptide..

#### RELATED PRODUCTS:

BRCA1 Antibody (3364).  
Anti-BRCA1 Antibody (BRCA1/1398) (A1448).  
Phospho-BRCA1 Antibody (3674).

**FOR RESEARCH USE ONLY! Not to be used on humans.**