

# Phospho-FANCG (Ser383) Antibody

**CATALOG NO.:** A1720-100 100 µl.

**BACKGROUND DESCRIPTION:** DNA repair protein that may operate in a postreplication repair or a cell cycle checkpoint function. May be implicated in interstrand DNA cross-link repair and in the maintenance of normal chromosome stability. Candidate tumor suppressor gene.

**ALTERNATE NAMES:** Fanconi anemia group G protein, Protein FACG, DNA repair protein XRCC9, FANCG, XRCC9.

**ANTIBODY TYPE:** Polyclonal

**CONCENTRATION:** 1mg/ml

**HOST/ISOTYPE:** Rabbit / IgG.

**IMMUNOGEN:** A synthesized peptide derived from human FANCG around the phosphorylation site of Serine 383.

**MOLECULAR WEIGHT:** 69 kDa.

**PURIFICATION:** Affinity purified.

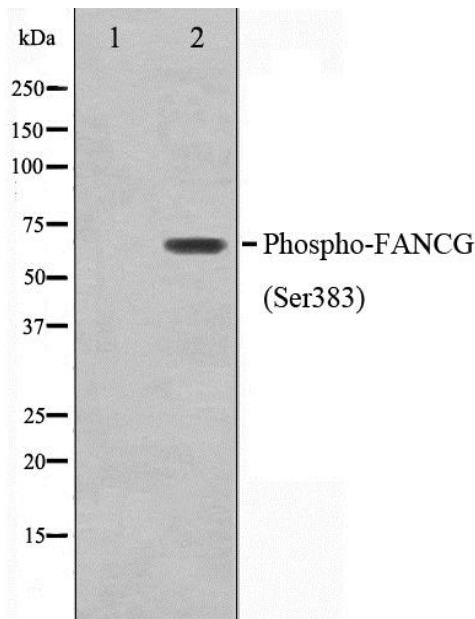
**FORM:** Liquid.

**FORMULATION:** In phosphate buffered saline , pH 7.4, 150mM NaCl, 0.02% sodium azide and 50% glycerol

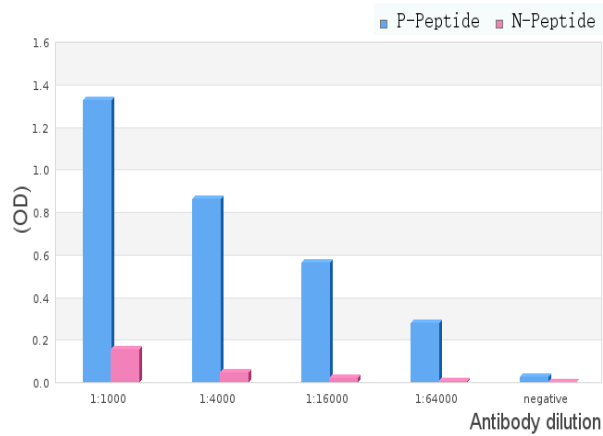
**SPECIES REACTIVITY:** Human.

**STORAGE CONDITIONS:** Store at -20°C; For long term storage store at -20°C in small aliquots to prevent freeze-thaw cycles.

**APPLICATIONS AND USAGE:** WB 1:500-1:2000, ELISA (peptide) 1:20000-1:40000.



Western blot analysis on K562 cell lysate using Phospho-FANCG (Ser383) Antibody. The lane on the left is treated with the antigen-specific peptide..



ELISA analysis of Phospho-FANCG (Ser383) Antibody showing specificity to Phospho-FANCG (Ser383) peptide.

Peptides concentration: 1ug/ml.  
 P-peptide: phospho-peptide;  
 N-peptide: non-phospho-peptide.

#### RELATED PRODUCTS:

Phospho-Chk2 (Thr68) Antibody (A1265).  
 Phospho-EGFR (Tyr1197) Antibody (A1034).  
 Phospho-Connexin 43 (Ser368) Antibody (A1268).  
 Phospho-Cofilin (Ser3) Antibody (A1267).

**FOR RESEARCH USE ONLY! Not to be used on humans.**