

Phospho-Paxillin (Ser178) Antibody

CATALOG NO.: A1721-100 100 µl.

BACKGROUND DESCRIPTION: Cytoskeletal protein involved in actin-membrane attachment at sites of cell adhesion to the extracellular matrix (focal adhesion).

ALTERNATE NAMES: Paired box protein Pax 1; PAX 1; PAX1; PAX1_HUMAN; Paxillin alpha; Paxillin; PXN; PXN protein.

ANTIBODY TYPE: Polyclonal

CONCENTRATION: 1mg/ml

HOST/ISOTYPE: Rabbit / IgG.

IMMUNOGEN: A synthesized peptide derived from human Paxillin around the phosphorylation site of Sersine 178.

MOLECULAR WEIGHT: 64 kDa.

PURIFICATION: Affinity purified.

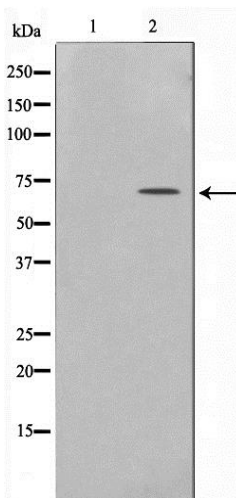
FORM: Liquid.

FORMULATION: In phosphate buffered saline , pH 7.4, 150 mM NaCl, 0.02% sodium azide and 50% glycerol

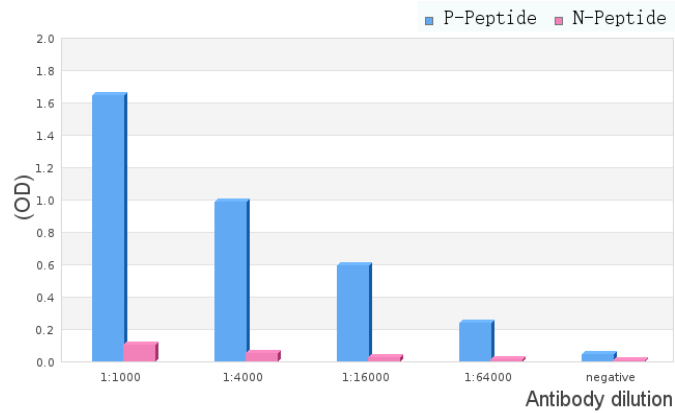
SPECIES REACTIVITY:
 Rat.
 Mouse.
 Human.

STORAGE CONDITIONS: Store at -20°C; For long term storage store at -20°C in small aliquots to prevent freeze-thaw cycles.

APPLICATIONS AND USAGE: WB 1:500-1:2000, ELISA (peptide) 1:20000-1:40000.



Western blot analysis on HeLa cell lysate using Phospho-Paxillin(Ser178) Antibody, The lane on the left is treated with the antigen-specific peptide..



ELISA analysis of Phospho-Paxillin (Ser178) Antibody showing specificity to Phospho-Paxillin(Ser178) peptide.

Peptides concentration: 1ug/ml.

P-peptide: phospho-peptide;
 N-peptide: non-phospho-peptide.

RELATED PRODUCTS:

Phospho-p53 (Ser376) Antibody (A1158).
 Phospho-LCK (Tyr394) Antibody (5C6) (A1027).
 Paxillin Antibody (3448).
 Phospho-MYPT1 (Thr696) Antibody (A1151).

FOR RESEARCH USE ONLY! Not to be used on humans.