

# Phospho-DYN1 (Ser778) Antibody

**CATALOG NO.:** A1722-100 100 µl.

**BACKGROUND DESCRIPTION:** Microtubule-associated force-producing protein involved in producing microtubule bundles and able to bind and hydrolyze GTP. Most probably involved in vesicular trafficking processes. Involved in receptor-mediated endocytosis.

**ALTERNATE NAMES:** B dynamin; D100; DNM 1; DNM; DNM1; DYN1\_HUMAN; Dynamin; Dynamin-1; Dynamin1.

**ANTIBODY TYPE:** Polyclonal

**CONCENTRATION:** 1mg/ml

**HOST/ISOTYPE:** Rabbit / IgG.

**IMMUNOGEN:** A synthesized peptide derived from human DYN1 around the phosphorylation site of Sersine 778.

**MOLECULAR WEIGHT:** 100 kDa.

**PURIFICATION:** Affinity purified.

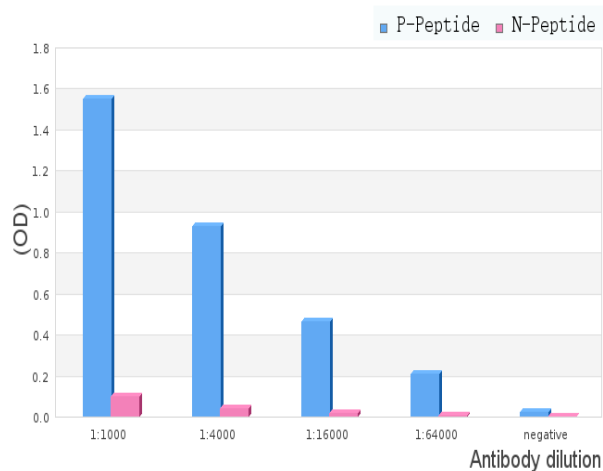
**FORM:** Liquid.

**FORMULATION:** In phosphate buffered saline , pH 7.4, 150 mM NaCl, 0.02% sodium azide and 50% glycerol

**SPECIES REACTIVITY:** Rat.  
 Mouse.  
 Human.

**STORAGE CONDITIONS:** Store at -20°C; For long term storage store at -20°C in small aliquots to prevent freeze-thaw cycles.

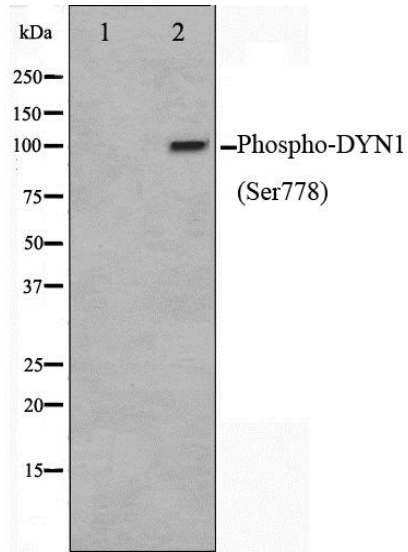
**APPLICATIONS AND USAGE:** WB 1:500-1:2000, ELISA (peptide) 1:20000-1:40000.



ELISA analysis of Phospho-DYN1 (Ser778) Antibody showing specificity to Phospho-DYN1 (Ser778) peptide.

Peptides concentration: 1µg/ml.

P-peptide: phospho-peptide;  
 N-peptide: non-phospho-peptide..



Western blot analysis on mouse brain cell lysate using Phospho-DYN1 (Ser778) Antibody, The lane on the left is treated with the antigen-specific peptide..

**RELATED PRODUCTS:**

- Phospho-Tyrosine Hydroxylase Antibody (3649).
- Phospho-Cdc25A (Ser75) Antibody (A1257).
- Phospho-ANAPC1 (Ser688) Antibody (A1156).
- Phospho-BID (Ser78) Antibody (A1152).

**FOR RESEARCH USE ONLY! Not to be used on humans.**