

Phospho-RIPK2 (Ser176) Antibody

CATALOG NO.: A1724-100 100 µl.

BACKGROUND DESCRIPTION: Serine/threonine/tyrosine kinase that plays an essential role in modulation of innate and adaptive immune responses. Upon stimulation by bacterial peptidoglycans, NOD1 and NOD2 are activated, oligomerize and recruit RIPK2 through CARD-CARD domains. Contributes to the tyrosine phosphorylation of the guanine exchange factor ARHGEF2 through Src tyrosine kinase leading to NF-kappaB activation by NOD2. Once recruited, RIPK2 autophosphorylates and undergoes 'Lys-63'-linked polyubiquitination by E3 ubiquitin ligases XIAP, BIRC2 and BIRC3. The polyubiquitinated protein mediates the recruitment of MAP3K7/TAK1 to IKBKG/NEMO and induces 'Lys-63'-linked polyubiquitination of IKBKG/NEMO and subsequent activation of IKKKB/IKKB.

ALTERNATE NAMES: Receptor-interacting serine/threonine-protein kinase 2, CARD-containing interleukin-1 beta-converting enzyme-associated kinase, CARD-containing IL-1 beta ICE-kinase, RIP-like-interacting CLARP kinase, Receptor-interacting protein 2, RIP-2, Tyrosine-protein kinase RIPK2.

ANTIBODY TYPE: Polyclonal

CONCENTRATION: 1mg/ml

HOST/ISOTYPE: Rabbit / IgG.

IMMUNOGEN: A synthesized peptide derived from human RIPK2 around the phosphorylation site of Sersine 176.

MOLECULAR WEIGHT: 70 kDa.

PURIFICATION: Affinity purified.

FORM: Liquid.

FORMULATION: In phosphate buffered saline , pH 7.4, 150 mM NaCl, 0.02% sodium azide and 50% glycerol

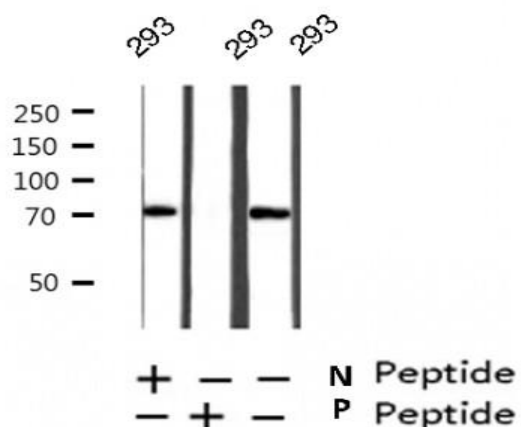
SPECIES REACTIVITY: Mouse.
Human.

STORAGE CONDITIONS: Store at -20°C; For long term storage store at -20°C in small aliquots to prevent freeze-thaw cycles.

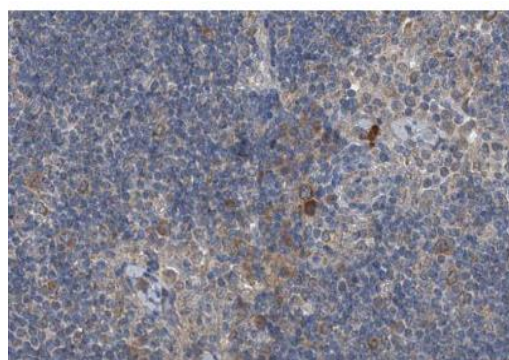
APPLICATIONS AND USAGE: WB 1:500-1:2000 IHC 1:50-1:200, IF/ICC 1:100-1:500, ELISA (peptide) 1:20000-1:40000.



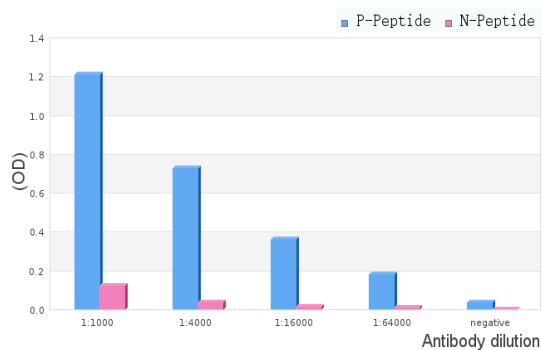
IF/ICC staining of 293 cells using Phospho-RIPK2 (Ser176) Antibody.



Western blot analysis on 293 cell lysate using Phospho-RIPK2 (Ser176) Antibody.



IHC staining human lymph node tissue sections using Phospho-RIPK2(Ser176) Antibody.



ELISA analysis of Phospho-RIPK2 (Ser176) Antibody showing specificity to Phospho-RIPK2 (Ser176) peptide.

Peptides concentration: 1ug/ml.

P-peptide: phospho-peptide;
N-peptide: non-phospho-peptide..

RELATED PRODUCTS:

- RIPK2, Active (7747).
- Phospho-EGFR (Tyr1197) Antibody (A1034).
- Phospho-Connexin 43 (Ser368) Antibody (A1268).

FOR RESEARCH USE ONLY! Not to be used on humans.