

Phospho-C-RAF (Ser301) Antibody

rev 01/19

CATALOG NO.: A1725-100 100 µl.

BACKGROUND DESCRIPTION: Serine/threonine-protein kinase that acts as a regulatory link between the membrane-associated Ras GTPases and the MAPK/ERK cascade, and this critical regulatory link functions as a switch determining cell fate decisions including proliferation, differentiation, apoptosis, survival and oncogenic transformation. RAF1 activation initiates a mitogen-activated protein kinase (MAPK) cascade that comprises a sequential phosphorylation of the dual-specific MAPK kinases (MAP2K1/MEK1 and MAP2K2/MEK2) and the extracellular signal-regulated kinases (MAPK3/ERK1 and MAPK1/ERK2). The phosphorylated form of RAF1 (on residues Ser-338 and Ser-339, by PAK1) phosphorylates BAD/Bcl2-antagonist of cell death at 'Ser-75'. Phosphorylates adenylyl cyclases: ADCY2, ADCY5 and ADCY6, resulting in their activation. Phosphorylates PPP1R12A resulting in inhibition of the phosphatase activity.

ALTERNATE NAMES: RAF proto-oncogene serine/threonine-protein kinase, Proto-oncogene c-RAF, cRaf, Raf-1, RAF1, RAF.

ANTIBODY TYPE: Polyclonal

CONCENTRATION: 1mg/ml

HOST/ISOTYPE: Rabbit / IgG.

IMMUNOGEN: A synthesized peptide derived from human C-RAF around the phosphorylation site of Sersine 301..

MOLECULAR WEIGHT: 73kDa.

PURIFICATION: Affinity purified.

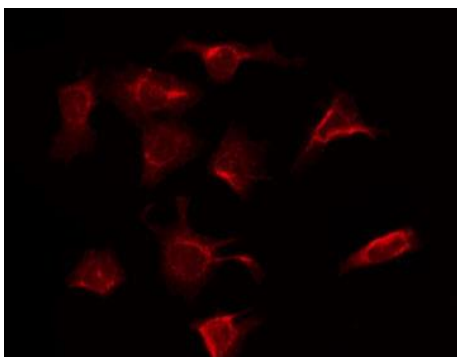
FORM: Liquid.

FORMULATION: In phosphate buffered saline , pH 7.4, 150 mM NaCl, 0.02% sodium azide and 50% glycerol

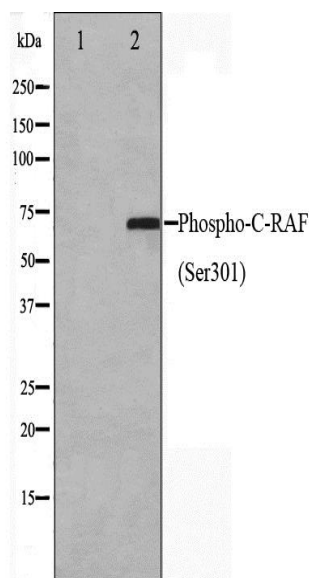
SPECIES REACTIVITY: Rat.
 Mouse.
 Human.

STORAGE CONDITIONS: Store at -20°C; For long term storage store at -20°C in small aliquots to prevent freeze-thaw cycles.

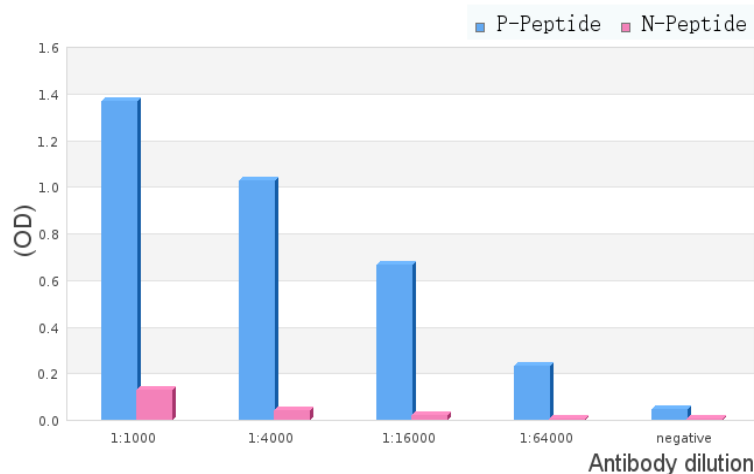
APPLICATIONS AND USAGE: WB 1:500-1:2000, IF/ICC 1:100-1:500, ELISA (peptide) 1:20000-1:40000.



IF/ICC staining of HeLa cells using Phospho-C-RAF(Ser301) Antibody.



Western blot analysis on Jurkat cell lysate using Phospho-C-RAF (Ser301) Antibody. The lane on the left is treated with the antigen-specific peptide.



Phospho-C-RAF (Ser301) Antibody: ELISA analysis of Phospho-C-RAF (Ser301) Antibody showing specificity to Phospho-C-RAF (Ser301) peptide.

Peptides concentration: 1ug/ml.

P-peptide: phospho-peptide;
 N-peptide: non-phospho-peptide.

RELATED PRODUCTS:

Phospho-Raf Antibody (3504).

Raf1 Antibody (3116).

Anti-BRAF V600E Rabbit Monoclonal Antibody (A1137).

FOR RESEARCH USE ONLY! Not to be used on humans.