

# Phospho-FER (Tyr402) Antibody

**CATALOG NO.:** A1727-100 100 µl.

**BACKGROUND DESCRIPTION:** Tyrosine-protein kinase that acts downstream of cell surface receptors for growth factors and plays a role in the regulation of the actin cytoskeleton, microtubule assembly, lamellipodia formation, cell adhesion, cell migration and chemotaxis. Acts downstream of EGFR, KIT, PDGFRA and PDGFRB. Acts downstream of EGFR to promote activation of NF-kappa-B and cell proliferation. May play a role in the regulation of the mitotic cell cycle. Plays a role in the insulin receptor signaling pathway and in activation of phosphatidylinositol 3-kinase. Acts downstream of the activated FCER1 receptor and plays a role in FCER1 (high affinity immunoglobulin epsilon receptor)-mediated signaling in mast cells.

**ALTERNATE NAMES:** Tyrosine-protein kinase Fer, Feline encephalitis virus-related kinase FER, Fujinami poultry sarcoma/Feline sarcoma-related protein Fer, Proto-oncogene c-Fer, Tyrosine kinase 3, p94-Fer, FER, TYK3.

**ANTIBODY TYPE:** Polyclonal

**CONCENTRATION:** 1mg/ml

**HOST/ISOTYPE:** Rabbit / IgG.

**IMMUNOGEN:** A synthesized peptide derived from human FER around the phosphorylation site of Tyrosine 402.

**MOLECULAR WEIGHT:** 85 kDa.

**PURIFICATION:** Affinity purified.

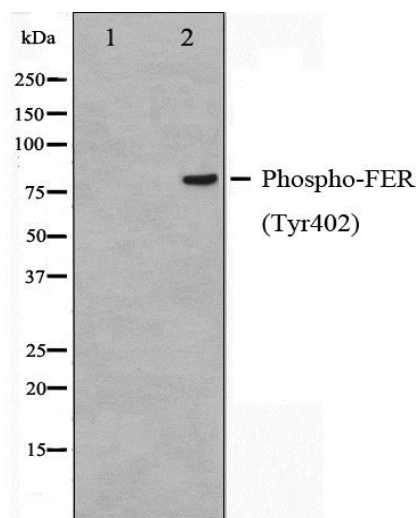
**FORM:** Liquid.

**FORMULATION:** In phosphate buffered saline , pH 7.4, 150 mM NaCl, 0.02% sodium azide and 50% glycerol

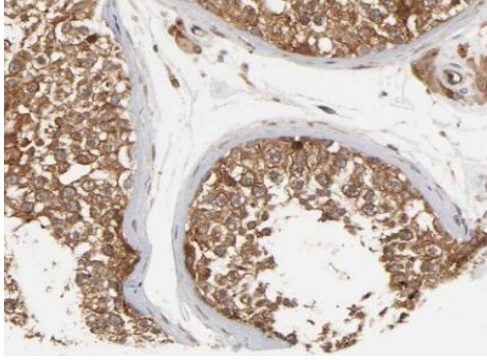
**SPECIES REACTIVITY:** Mouse.  
Human.

**STORAGE CONDITIONS:** Store at -20°C; For long term storage store at -20°C in small aliquots to prevent freeze-thaw cycles.

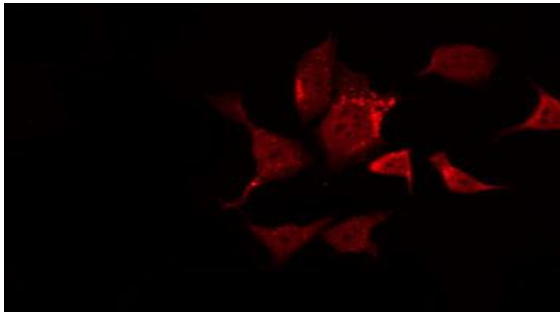
**APPLICATIONS AND USAGE:** WB 1:500-1:2000 IHC 1:50-1:200, IF/ICC 1:100-1:500, ELISA (peptide) 1:20000-1:40000.



Western blot analysis on Jurkat cell lysate using Phospho-FER(Tyr402) Antibody. The lane on the left is treated with the antigen-specific peptide.



IHC staining of human testis tissue sections using Phospho-FER (Tyr402) Antibody.



IF/ICC staining of HeLa cells using Phospho-FER (Tyr402) Antibody.

**RELATED PRODUCTS:**

Phospho-ANAPC1 (Ser688) Antibody (A1156).  
Phospho-c-Myc (Thr58) Antibody (A1266).  
Phospho-ASK1 (Ser83) Antibody (A1241).

***FOR RESEARCH USE ONLY! Not to be used on humans.***