

Phospho-Glucocorticoid Receptor (Ser203) Antibody

CATALOG NO.: A1728-100 100 µl.

BACKGROUND DESCRIPTION: Receptor for glucocorticoids (GC). Has a dual mode of action: as a transcription factor that binds to glucocorticoid response elements (GRE), both for nuclear and mitochondrial DNA, and as a modulator of other transcription factors. Affects inflammatory responses, cellular proliferation and differentiation in target tissues. Involved in chromatin remodeling. Plays a role in rapid mRNA degradation by binding to the 5' UTR of target mRNAs and interacting with PNR2 in a ligand-dependent manner which recruits the RNA helicase UPF1 and the mRNA-decapping enzyme DCP1A, leading to RNA decay. Could act as a coactivator for STAT5-dependent transcription upon growth hormone (GH) stimulation and could reveal an essential role of hepatic GR in the control of body growth.

ALTERNATE NAMES: Glucocorticoid receptor, GR, Nuclear receptor subfamily 3 group C member 1, NR3C1, GRL.

ANTIBODY TYPE: Polyclonal

CONCENTRATION: 1mg/ml

HOST/ISOTYPE: Rabbit / IgG.

IMMUNOGEN: A synthesized peptide derived from human GR around the phosphorylation site of Sersine 203..

MOLECULAR WEIGHT: 86 kDa.

PURIFICATION: Affinity purified.

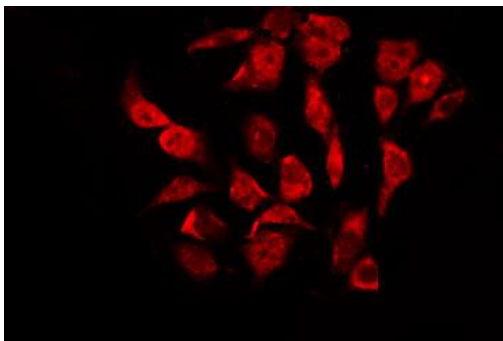
FORM: Liquid.

FORMULATION: In phosphate buffered saline , pH 7.4, 150mM NaCl, 0.02% sodium azide and 50% glycerol

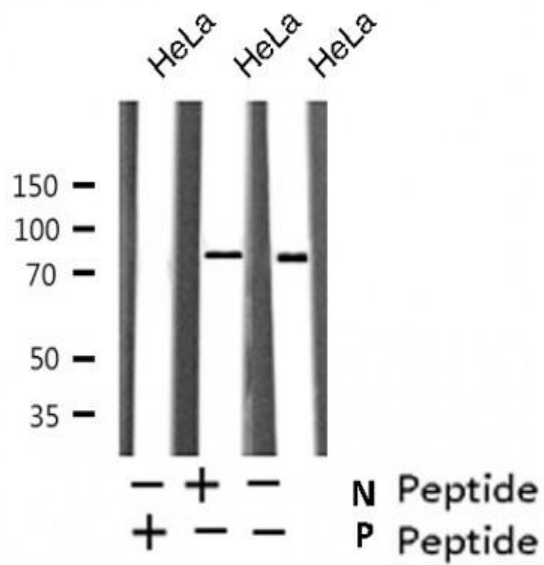
SPECIES REACTIVITY: Mouse.
Human.

STORAGE CONDITIONS: Store at -20°C; For long term storage store at -20°C in small aliquots to prevent freeze-thaw cycles.

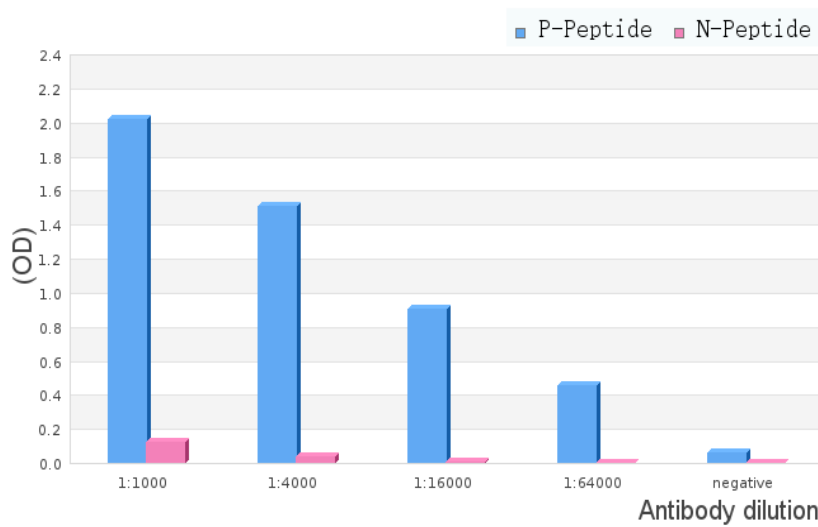
APPLICATIONS AND USAGE: WB 1:500-1:2000, IF/ICC 1:100-1:500, ELISA (peptide) 1:20000-1:40000.



IF/ICC staining HeLa cells using Phospho-Glucocorticoid Receptor (Ser203) Antibody.



Western blot analysis on HeLa cell lysate using Phospho-GR (Ser203) Antibody. The lane on the left is treated with the antigen-specific peptide.



ELISA analysis of Phospho-Glucocorticoid Receptor (Ser203) Antibody showing specificity to Phospho-GR (Ser203) peptide.

Peptides concentration: 1ug/ml.
P-peptide: phospho-peptide;
N-peptide: non-phospho-peptide.

RELATED PRODUCTS:

- Phospho-BID (Ser78) Antibody (A1152).
- Phospho-Caveolin-1 (Tyr14) Antibody (A1254).
- Phospho-EGFR (Tyr1197) Antibody (A1034).
- Phospho-C/EBP β (Thr235) Antibody (A1253).

FOR RESEARCH USE ONLY! Not to be used on humans.