

# Phospho-MUC1 (Tyr1229) Antibody

**CATALOG NO.:** A1729-100 100 µl.

**BACKGROUND DESCRIPTION:** The alpha subunit has cell adhesive properties. Can act both as an adhesion and an anti-adhesion protein. May provide a protective layer on epithelial cells against bacterial and enzyme attack. The beta subunit contains a C-terminal domain which is involved in cell signaling, through phosphorylations and protein-protein interactions. Modulates signaling in ERK, SRC and NF-kappa-B pathways. In activated T-cells, influences directly or indirectly the Ras/MAPK pathway. Promotes tumor progression. Regulates TP53-mediated transcription and determines cell fate in the genotoxic stress response. Binds, together with KLF4, the PE21 promoter element of TP53 and represses TP53 activity.

**ALTERNATE NAMES:** Mucin-1, MUC-1, Breast carcinoma-associated antigen DF3, Cancer antigen 15-3, CA 15-3, Carcinoma-associated mucin, Episialin, H23AG, Krebs von den Lungen-6, KL-6, PEMT, Peanut-reactive urinary mucin, PUM, Polymorphic epithelial mucin, PEM, Tumor-associated epithelial membrane antigen, EMA, Tumor-associated mucin, CD227.

**ANTIBODY TYPE:** Polyclonal

**CONCENTRATION:** 1mg/ml

**HOST/ISOTYPE:** Rabbit / IgG.

**IMMUNOGEN:** A synthesized peptide derived from human CD227/MUC1 around the phosphorylation site of Tyrosine 1229.

**MOLECULAR WEIGHT:** 170 kDa.

**PURIFICATION:** Affinity purified.

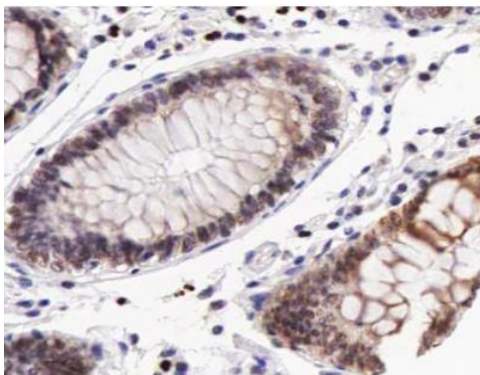
**FORM:** Liquid.

**FORMULATION:** In phosphate buffered saline, pH 7.4, 150 mM NaCl, 0.02% sodium azide and 50% glycerol.

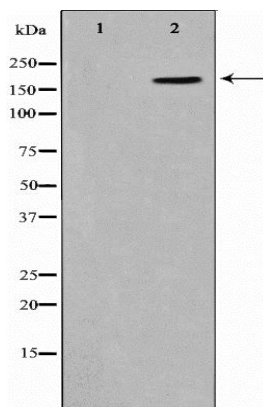
**SPECIES REACTIVITY:** Human.

**STORAGE CONDITIONS:** Store at -20°C; For long term storage store at -20°C in small aliquots to prevent freeze-thaw cycles.

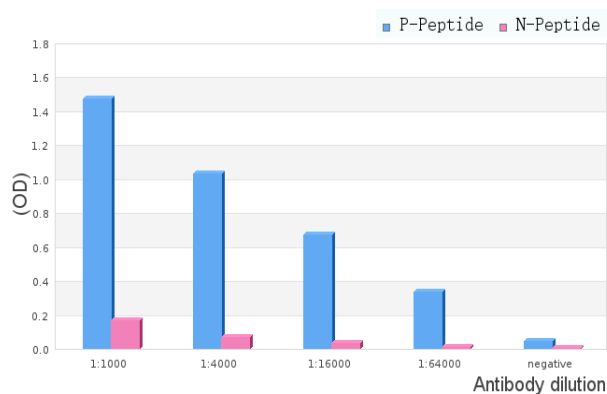
**APPLICATIONS AND USAGE:** WB 1:500-1:2000 IHC 1:50-1:200 IF/ICC 1:100-1:500, ELISA (peptide) 1:20000-1:40000.



IHC staining of human colon carcinoma tissue sections using Phospho-MUC1 (Tyr1229) Antibody.



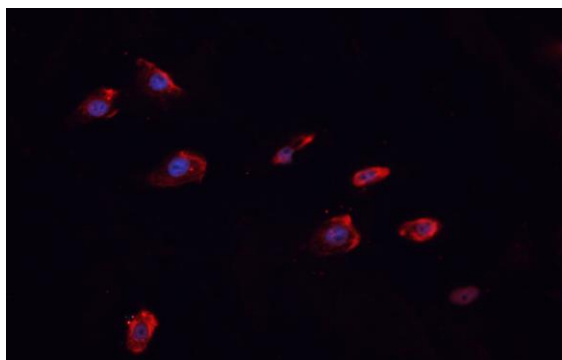
Western blot analysis on HepG2 cell lysate using Phospho-MUC1 (Tyr1229) Antibody. The lane on the left is treated with the antigen-specific peptide.



ELISA analysis of Phospho-MUC1 (Tyr1229) Antibody showing specificity to Phospho-MUC1 (Tyr1229) peptide.

Peptides concentration: 1ug/ml.

P-peptide: phospho-peptide;  
 N-peptide: non-phospho-peptide.



IF/ICC staining of MCF-7 cells using Phospho-MUC1 (Tyr1229) Antibody.

#### RELATED PRODUCTS:

Human CellExp™ Mucin-1/MUC-1, human recombinant (8019).  
 Anti-MUC1 Antibody (EP1024Y) (347CT26.1.3) (A1009).

**FOR RESEARCH USE ONLY! Not to be used on humans.**