

Phospho-eNOS (Ser615) Antibody

CATALOG NO.: A1730-100 100 µl.

BACKGROUND DESCRIPTION: Produces nitric oxide (NO) which is implicated in vascular smooth muscle relaxation through a cGMP-mediated signal transduction pathway. NO mediates vascular endothelial growth factor (VEGF)-induced angiogenesis in coronary vessels and promotes blood clotting through the activation of platelets.

ALTERNATE NAMES: Nitric oxide synthase, endothelial, cNOS, EC-NOS, Endothelial NOS, eNOS, NOS type III, NOSIII, NOS3.

ANTIBODY TYPE: Polyclonal

CONCENTRATION: 1mg/ml

HOST/ISOTYPE: Rabbit / IgG.

IMMUNOGEN: A synthesized peptide derived from human eNOS around the phosphorylation site of Sersine 615..

MOLECULAR WEIGHT: 140 kDa.

PURIFICATION: Affinity purified.

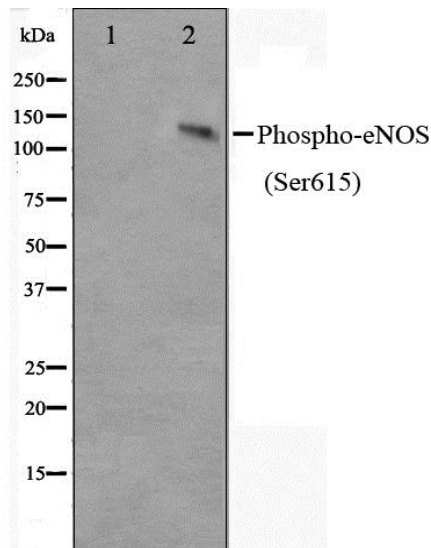
FORM: Liquid.

FORMULATION: In phosphate buffered saline, pH 7.4, 150 mM NaCl, 0.02% sodium azide and 50% glycerol.

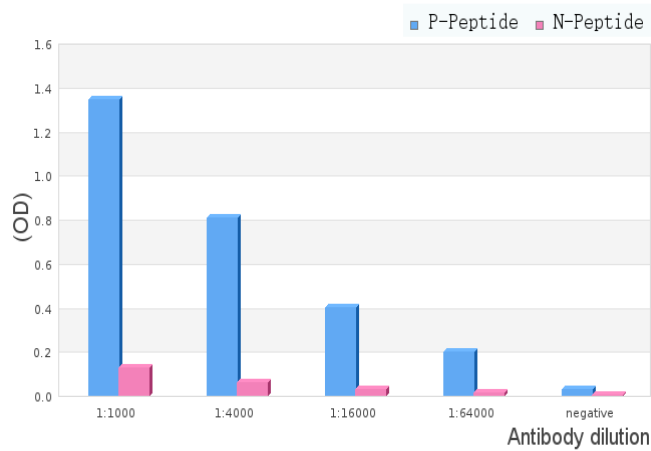
SPECIES REACTIVITY:
 Rat.
 Mouse.
 Human.

STORAGE CONDITIONS: Store at -20°C; For long term storage store at -20°C in small aliquots to prevent freeze-thaw cycles.

APPLICATIONS AND USAGE: WB 1:500-1:2000, IF/ICC 1:100-1:500, ELISA (peptide) 1:20000-1:40000.

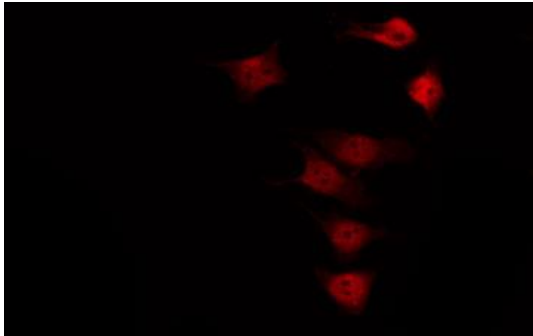


Western blot analysis on K562 cell lysate using Phospho-eNOS (Ser615) Antibody. The lane on the left is treated with the antigen-specific peptide.



ELISA analysis of Phospho-eNOS (Ser615) Antibody showing specificity to Phospho-eNOS (Ser615) peptide.

Peptides concentration: 1 ug/ml.
 P-peptide: phospho-peptide;
 N-peptide: non-phospho-peptide.



IF/ICC staining of staining K562 using Phospho-eNOS (Ser615) Antibody.

RELATED PRODUCTS:

NOS3 / eNOS (Mouse) ELISA Kit (E4651).
 eNOS Antibody (3426R).
 NOS3 / eNOS (Human) ELISA Kit (E4650).
 NOS3 / eNOS (Rat) ELISA Kit (E4652).

FOR RESEARCH USE ONLY! Not to be used on humans.