

Phospho-hnRPD (Ser83) Antibody

CATALOG NO.: A1731-100 100 µl.

BACKGROUND DESCRIPTION: Binds with high affinity to RNA molecules that contain AU-rich elements (AREs) found within the 3'-UTR of many proto-oncogenes and cytokine mRNAs. Also binds to double- and single-stranded DNA sequences in a specific manner and functions a transcription factor. Each of the RNA-binding domains specifically can bind solely to a single-stranded non-monotonous 5'-UUAG-3' sequence and also weaker to the single-stranded 5'-TTAGGG-3' telomeric DNA repeat. Binds RNA oligonucleotides with 5'-UUAGGG-3' repeats more tightly than the telomeric single-stranded DNA 5'-TTAGGG-3' repeats. Binding of RRM1 to DNA inhibits the formation of DNA quadruplex structure which may play a role in telomere elongation.

ALTERNATE NAMES: ARE binding protein AUF1 type A; AU-rich element RNA-binding protein 1; AUF; AUF1; AUF1A; Heterogeneous nuclear ribonucleoprotein D0; hnRNP D; hnRNP D0; Hnrnpd; hnRNPD0; HNRPD; HNRPD_HUMAN; P37.

ANTIBODY TYPE: Polyclonal

CONCENTRATION: 1mg/ml

HOST/ISOTYPE: Rabbit / IgG.

IMMUNOGEN: A synthesized peptide derived from human hnRPD around the phosphorylation site of Serine 83.

MOLECULAR WEIGHT: 38 kDa.

PURIFICATION: Affinity purified.

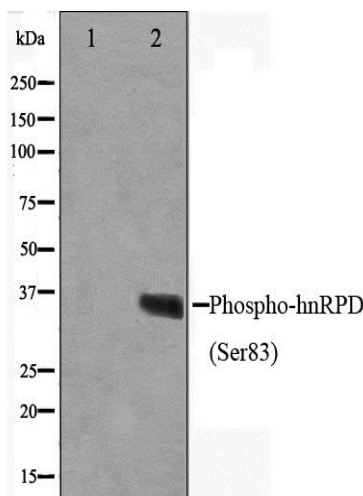
FORM: Liquid.

FORMULATION: In phosphate buffered saline , pH 7.4, 150 mM NaCl, 0.02% sodium azide and 50% glycerol

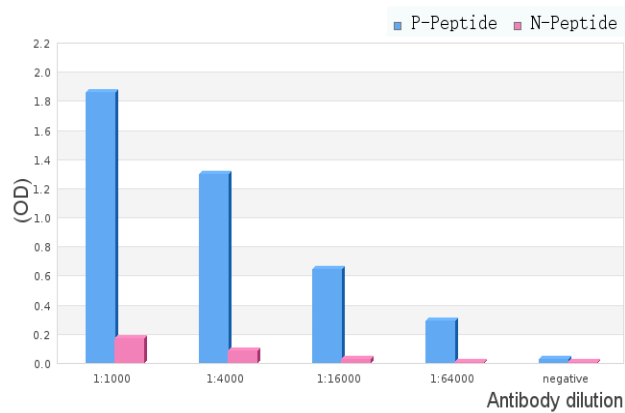
SPECIES REACTIVITY: Rat.
Mouse.
Human.

STORAGE CONDITIONS: Store at -20°C; For long term storage store at -20°C in small aliquots to prevent freeze-thaw cycles.

APPLICATIONS AND USAGE: WB 1:500-1:2000 IHC 1:50-1:200 IF/ICC 1:100-1:500, ELISA (peptide) 1:20000-1:40000.

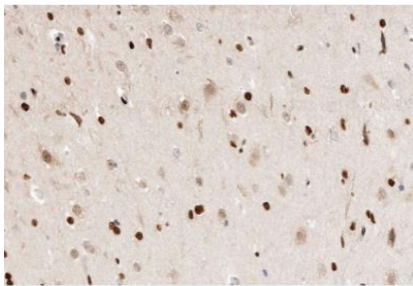


Western blot analysis on HuvEc cell lysate using Phospho-hnRPD (Ser83) Antibody. The lane on the left is treated with the antigen-specific peptide.



ELISA analysis of Phospho-hnRPD (Ser83) Antibody showing specificity to Phospho-hnRPD (Ser83) peptide.

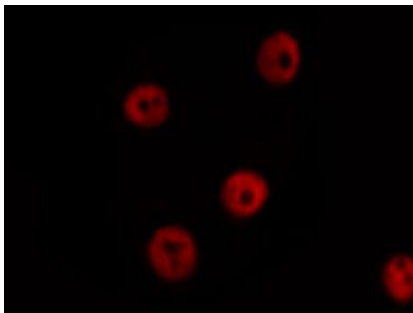
Peptides concentration: 1ug/ml.
 P-peptide: phospho-peptide;
 N-peptide: non-phospho-peptide.



IHC staining of human brain tissue sections using Phospho-hnRPD (Ser83) Antibody.



IF/ICC staining of HeLa cells using Phospho-hnRPD (Ser83) Antibody.



IF/ICC staining of HuvEc cells using Phospho-hnRPD (Ser83) Antibody.

RELATED PRODUCTS:

Phospho CREB (Ser129) Antibody (A1222).
 Phospho-Calnexin (Ser583) Antibody (A1252).
 Phospho-ANAPC1 (Ser688) Antibody (A1156).

FOR RESEARCH USE ONLY! Not to be used on humans

Gentaur Europe BVBA Voortstraat 49, 1910 Kampenhout BELGIUM
 Tel 0032 16 58 90 45 info@gentaur.com

