

Phospho-HBP1 (Ser402) Antibody

CATALOG NO.: A1732-100 100 µl.

BACKGROUND DESCRIPTION: Transcriptional repressor that binds to the promoter region of target genes. Plays a role in the regulation of the cell cycle and of the Wnt pathway. Binds preferentially to the sequence 5'-TTCATTCATTCA-3'. Binding to the H1F0 promoter is enhanced by interaction with RB1. Disrupts the interaction between DNA and TCF4.

ALTERNATE NAMES: HMG box-containing protein 1, HMG box transcription factor 1, High mobility group box transcription factor 1, HBP1.

ANTIBODY TYPE: Polyclonal

CONCENTRATION: 1mg/ml

HOST/ISOTYPE: Rabbit / IgG.

IMMUNOGEN: A synthesized peptide derived from human HBP1 around the phosphorylation site of Sersine 402..

MOLECULAR WEIGHT: 58 kDa.

PURIFICATION: Affinity purified.

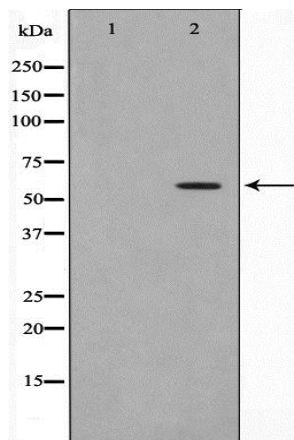
FORM: Liquid.

FORMULATION: In phosphate buffered saline , pH 7.4, 150 mM NaCl, 0.02% sodium azide and 50% glycerol

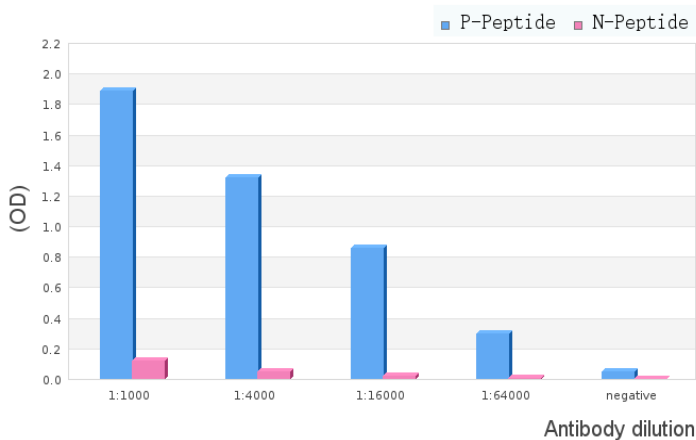
SPECIES REACTIVITY: Human.

STORAGE CONDITIONS: Store at -20°C; For long term storage store at -20°C in small aliquots to prevent freeze-thaw cycles.

APPLICATIONS AND USAGE: WB 1:500-1:2000, IF/ICC 1:100-1:500, ELISA (peptide) 1:20000-1:40000.



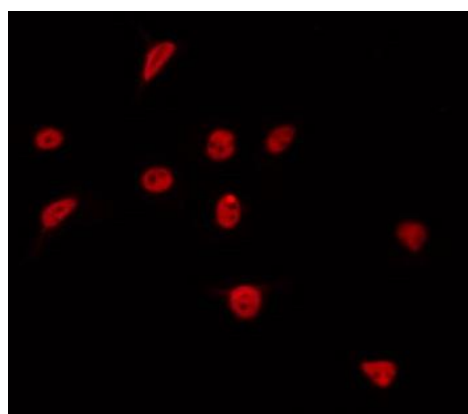
Western blot analysis on A549 cell lysate using Phospho-HBP1 (Ser402) Antibody. The lane on the left is treated with the antigen-specific peptide.



ELISA analysis of Phospho-HBP1 (Ser402) Antibody showing specificity to Phospho-HBP1 (Ser402) peptide.

Peptides concentration: 1ug/ml.

P-peptide: phospho-peptide;
 N-peptide: non-phospho-peptide.



IF/ICC staining of A549 cells using Phospho-HBP1 (Ser402) Antibody.

RELATED PRODUCTS:

Phospho-Cdc25C (Ser216) Antibody (A1259).
 Phospho-DDX3X (Thr322) Antibody (A1155).
 Phospho-Chk1 (Ser317) Antibody (A1263).
 HSBP1, human recombinant (4906).

FOR RESEARCH USE ONLY! Not to be used on humans.