

Phospho-CCR5 (Ser349) Antibody

CATALOG NO.: A1734-100 100 µl.

BACKGROUND DESCRIPTION: CCR5 a 7-transmembrane G-linked receptor for a number of inflammatory C-C type chemokines including MIP-1-alpha, MIP-1-beta and RANTES. Transduces a signal by increasing the intracellular calcium ion level. May play a role in the control of granulocytic lineage proliferation or differentiation. Acts as a coreceptor (along with CD4) for HIV-1 R5 isolates. Interacts with PRAF2. Interacts with HIV-1 surface protein gp120. Efficient ligand binding to CCL3/MIP-1alpha and CCR4/MIP-1beta requires sulfation, Oglycosylation and sialic acid modifications. Glycosylation on S6 is required for efficient binding of CCL4.

ALTERNATE NAMES: AM4 7; C C chemokine receptor type 5; C C CKR 5; C-C chemokine receptor type 5; C-C motif chemokine receptor 5 A159A; CC Chemokine Receptor 5; CC Chemokine Receptor Type 5; CC CKR 5; CC-CKR-5; CCR5 chemokine (C C motif) receptor 5; CCR5_HUMAN; CD 195; CD195; CD195 Antigen; Chemokine C C motif receptor 5; Chemokine receptor CCR5; CKR 5; HIV 1 Fusion Coreceptor; HIV-1 fusion coreceptor; HIV1 fusion coreceptor; IDDM22; MIP-1 alpha receptor.

ANTIBODY TYPE: Polyclonal

CONCENTRATION: 1mg/ml

HOST/ISOTYPE: Rabbit / IgG.

IMMUNOGEN: A synthesized peptide derived from human CCR5 around the phosphorylation site of Sersine 349.

MOLECULAR WEIGHT: 40kDa.

PURIFICATION: Affinity purified.

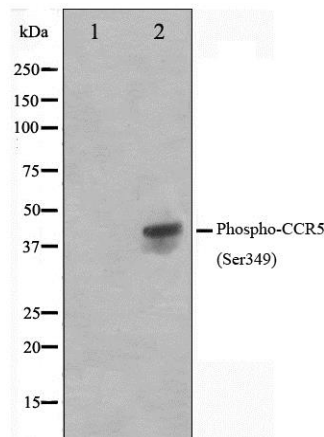
FORM: Liquid.

FORMULATION: In phosphate buffered saline, pH 7.4, 150mM NaCl, 0.02% sodium azide and 50% glycerol.

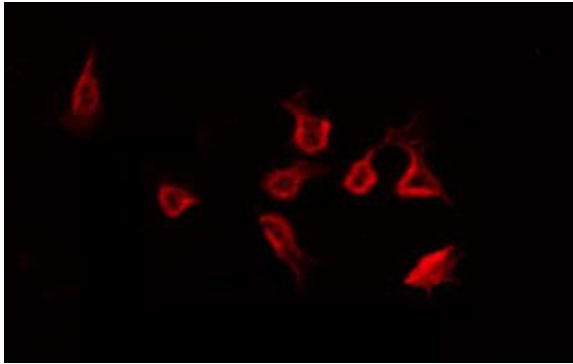
SPECIES REACTIVITY: Human.

STORAGE CONDITIONS: Store at -20°C; For long term storage store at -20°C in small aliquots to prevent freeze-thaw cycles.

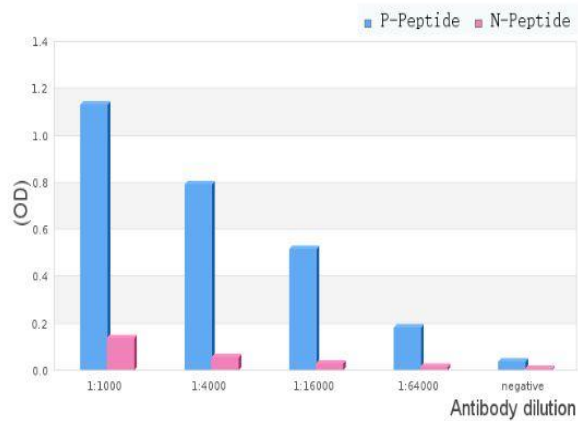
APPLICATIONS AND USAGE: WB 1:500-1:2000, IF/ICC 1:100-1:500, ELISA (peptide) 1:20000-1:40000.



Western blot analysis on Jurkat cell lysate using Phospho-CCR5 (Ser349) Antibody. The lane on the left is treated with the antigen-specific peptide.



IF/ICC staining of HeLa cells using Phospho-CCR5 (Ser349) Antibody.



ELISA analysis of Phospho-CCR5 (Ser349) Antibody showing specificity to Phospho-CCR5 (Ser349) peptide.

Peptides concentration: 1ug/ml.
 P-peptide: phospho-peptide.
 N-peptide: non-phospho-peptide.

RELATED PRODUCTS:

Phospho CREB (Ser129) Antibody (A1222).
 Vicriviroc Malate (1599).
 CCL4 Antibody (Center) (6731).
 Phospho-Caspase-6 (Ser257) antibody (A1013).

FOR RESEARCH USE ONLY! Not to be used on humans.