

# Phospho-PYK2(Tyr580) Antibody

**CATALOG NO.:** A1735-100 100 µl.

**BACKGROUND DESCRIPTION:** Pyk2 a nonreceptor tyrosine kinase of the Fak family. Predominantly expressed in the cells derived from hematopoietic lineages and in the central nervous system. Pyk2 is one of the signaling mediators for G-protein-coupled receptors. Involved in calcium induced regulation of ion channel and activation of the map kinase signaling pathway. Interacts with the SH2 domain of Grb2.

**ALTERNATE NAMES:** CADTK; CAK-beta; CAKB; CAKbeta; Calcium regulated non receptor proline rich tyrosine kinase; Calcium-dependent tyrosine kinase; Cell adhesion kinase beta; E430023O05Rik; EC 2.7.10.2; FADK 2; FADK2; FAK2; FAK2\_HUMAN; Focal adhesion kinase 2; MGC124628; PKB; Proline-rich tyrosine kinase 2; Protein kinase B; Protein Tyrosine Kinase 2 Beta; Protein-tyrosine kinase 2-beta; PTK; PTK2B; PTK2B protein tyrosine kinase 2 beta; PYK2; RAFTK; RAFTK2; Related adhesion focal tyrosine kinase.

**ANTIBODY TYPE:** Polyclonal

**CONCENTRATION:** 1mg/ml

**HOST/ISOTYPE:** Rabbit / IgG.

**IMMUNOGEN:** A synthesized peptide derived from human PYK2 around the phosphorylation site of Tyrosine 580.

**MOLECULAR WEIGHT:** 135kDa.

**PURIFICATION:** Affinity purification.

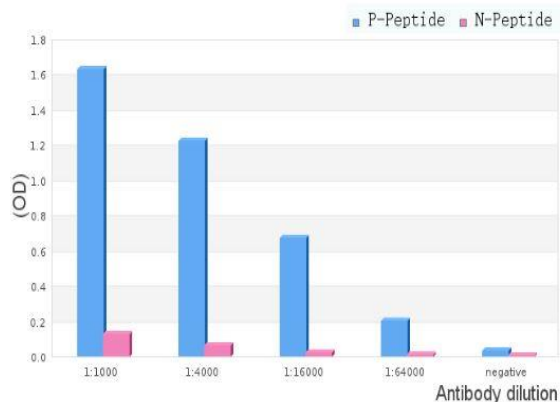
**FORM:** Liquid.

**FORMULATION:** In phosphate buffered saline, pH 7.4, 150mM NaCl, 0.02% sodium azide and 50% glycerol.

**SPECIES REACTIVITY:** Rat.  
Mouse.  
Human.

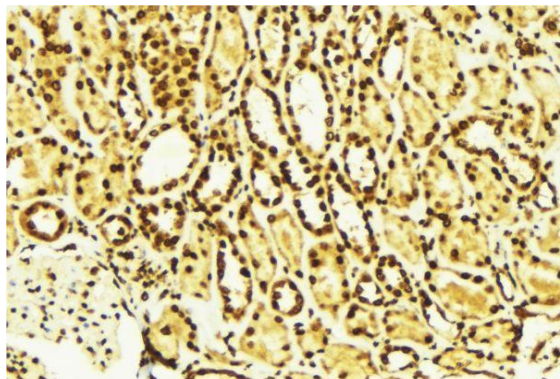
**STORAGE CONDITIONS:** Store at -20°C; For long term storage store at -20°C in small aliquots to prevent freeze-thaw cycles.

**APPLICATIONS AND USAGE:** WB 1:500-1:2000 IHC 1:50-1:200, ELISA (peptide) 1:20000-1:40000.

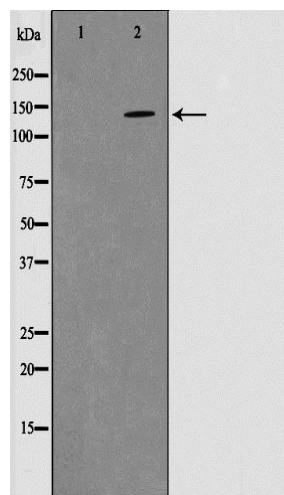


ELISA analysis of Phospho-PYK2 (Tyr580) Antibody showing specificity to Phospho-PYK2 (Tyr580) peptide.

Peptides concentration: 1µg/ml.  
P-peptide: phospho-peptide.  
N-peptide: non-phospho-peptide.



IHC-P staining of Mouse kidney tissue using Phospho-PYK2 (Tyr580) Antibody.



Western blot analysis on mouse brain cell lysate using Phospho-PYK2 (Tyr580) Antibody. The lane on the left is treated with the antigen-specific peptide.

**RELATED PRODUCTS:**

- Phospho-AKT1 (Ser473) Antibody (A1041).
- Phospho-AKT1 (Tyr474) Antibody (A1036).
- Anti-Akt1 Rabbit Monoclonal Antibody (A1117).

***FOR RESEARCH USE ONLY! Not to be used on humans.***