

# Phospho-EPHA2/3/4 (Tyr588/596) Antibody

CATALOG NO.: A1736-100 100 µl.

**BACKGROUND DESCRIPTION:** EphA2 a receptor tyrosine kinase. Receptor for members of the ephrin-A family. Binds to ephrin-A1, -A3, -A4 AND -A5. The Eph receptor tyrosine kinase family, the largest in the tyrosine kinase group, has fourteen members. They bind membrane-anchored ligands, ephrins, at sites of cell-cell contact, regulating the repulsion and adhesion of cells that underlie the establishment, maintenance, and remodeling of patterns of cellular organization. Eph signals are particularly important in regulating cell adhesion and cell migration during development, axon guidance, homeostasis and disease.

**ALTERNATE NAMES:** CTPA; CTPP1; CTRCT6; Eph receptor A2; EPHA2; EPHA2, Ephrin receptor EphA2; Ephrin type A receptor 2; Ephrin type-A receptor 2; Epithelial cell kinase; Epithelial cell receptor protein tyrosine kinase; Myk 2; Myk2; Sek 2; Sek2; Soluble EPHA2 variant 1; Tyrosine protein kinase receptor ECK; Tyrosine-protein kinase receptor ECK; Tyrosine-protein kinase receptor MPK-5; Tyrosine-protein kinase receptor SEK-2; Eph receptor A3; EPH-like kinase 4; EPH-like tyrosine kinase 1; EPHA3; EPHA3\_HUMAN; Ephrin receptor EphA3; Ephrin type-A receptor 3; ETK 1; Human embryo kinase 1; Human embryo kinase; Mek4; MGC109882; Receptor tyrosine kinase HEK; Testicular tissue protein Li 64; Tyro 4; Tyro4; TYRO4 protein tyrosine kinase; Tyrosine protein kinase receptor ETK 1; Tyrosine-protein kinase receptor ETK1; Tyrosine-protein kinase TYRO4; Cek 8; eph receptor a4; EPH-like kinase 8; EPHA4; EPHA4\_HUMAN; Ephrin type-A receptor 4; HEK 8; hEK8; Receptor protein-tyrosine kinase HEK8; Sek 1; SEK; TYRO 1 protein tyrosine kinase; TYRO1; Tyrosine-protein kinase receptor SEK; Tyrosine-protein kinase TYRO1;.

**ANTIBODY TYPE:** Polyclonal

**CONCENTRATION:** 1mg/ml

**HOST/ISOTYPE:** Rabbit / IgG.

**IMMUNOGEN:** A synthesized peptide derived from human EPHA2/3/4 around the phosphorylation site of Tyrosine 588 and 596.

**MOLECULAR WEIGHT:** 130kDa.

**PURIFICATION:** Affinity purification.

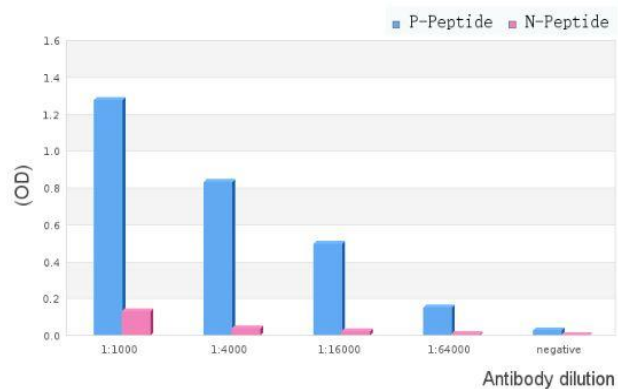
**FORM:** Liquid.

**FORMULATION:** In phosphate buffered saline , pH 7.4, 150mM NaCl, 0.02% sodium azide and 50% glycerol.

**SPECIES REACTIVITY:** Rat.  
Mouse.  
Human.

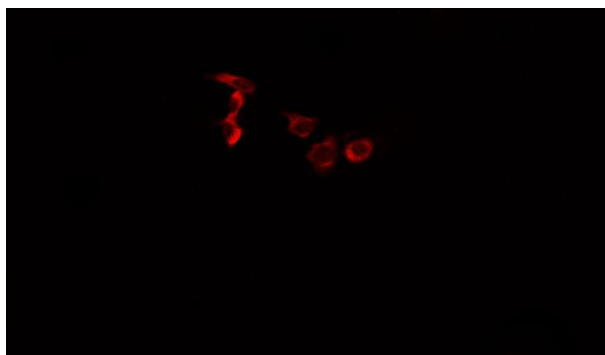
**STORAGE CONDITIONS:** Store at -20°C; For long term storage store at -20°C in small aliquots to prevent freeze-thaw cycles.

**APPLICATIONS AND USAGE:** WB 1:500-1:2000 IF/ICC 1:100-1:500, ELISA(peptide) 1:20000-1:40000.

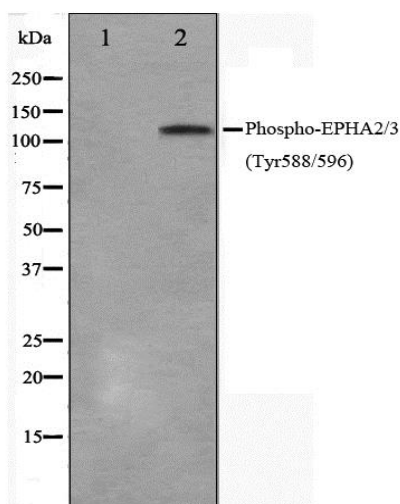


ELISA analysis of Phospho-EPHA2/3/4(Tyr588/596) Antibody showing specificity to Phospho-EPHA2/3/4(Tyr588/596) peptide.

Peptides concentration: 1ug/ml.  
 P-peptide: phospho-peptide.  
 N-peptide: non-phospho-peptide.



IF/ICC staining of A549 cells using Phospho-EPHA2/3/4(Tyr588/596) Antibody.



Western blot analysis on HepG2 cell lysate using Phospho-EPHA2/3(Tyr588/596) Antibody. The lane on the left is treated with the antigen-specific peptide.

#### RELATED PRODUCTS:

Phospho-EPS15 (Tyr849) Antibody (A1718).  
 Human CellExp™ TYRO3 / Dtk, Human recombinant (P1136).  
 Phospho-VAV3 (Tyr173) Antibody (A1713).

**FOR RESEARCH USE ONLY! Not to be used on humans.**