

# Phospho-ERK8(Thr175+Tyr177) Antibody

CATALOG NO.: A1737-100 100 µl.

**BACKGROUND DESCRIPTION:** ERK7 is phosphorylates MBP in vitro. Interacts with CSK/cSrc, ABL1 and RET. 3 isoforms of the human protein are produced by alternative splicing.

**ALTERNATE NAMES:** ERK-7; ERK-8; ERK7; ERK8; Extracellular regulated kinase 8 delta; Extracellular signal regulated kinase 8; Extracellular signal-regulated kinase 7; Extracellular signal-regulated kinase 8; MAP kinase 15; MAPK 15; Mapk15; Mitogen activated protein kinase 15; Mitogen-activated protein kinase 15; MK15\_HUMAN.

**ANTIBODY TYPE:** Polyclonal

**CONCENTRATION:** 1mg/ml

**HOST/ISOTYPE:** Rabbit / IgG.

**IMMUNOGEN:** A synthesized peptide derived from human ERK8 around the phosphorylation site of Threonine 175 and Tyrosine 177.

**MOLECULAR WEIGHT:** 60kDa.

**PURIFICATION:** Affinity purification.

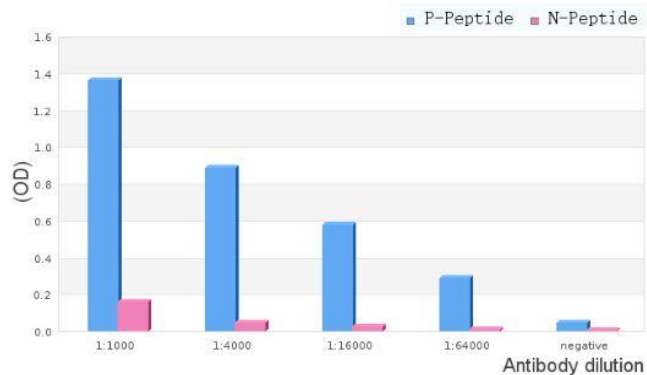
**FORM:** Liquid.

**FORMULATION:** In phosphate buffered saline, pH 7.4, 150mM NaCl, 0.02% sodium azide and 50% glycerol.

**SPECIES REACTIVITY:** Mouse.  
Human.

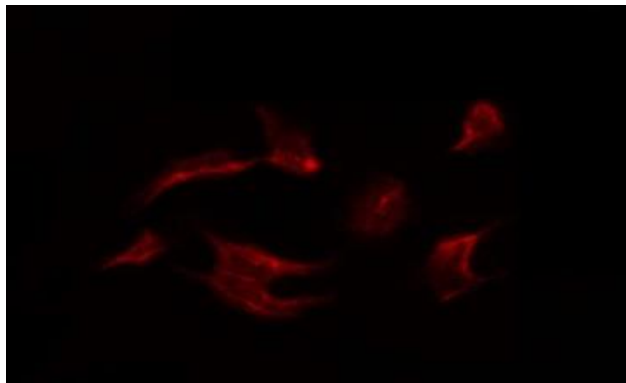
**STORAGE CONDITIONS:** Store at -20°C; For long term storage store at -20°C in small aliquots to prevent freeze-thaw cycles.

**APPLICATIONS AND USAGE:** WB 1:500-1:2000, IF/ICC 1:100-1:500, ELISA (peptide) 1:20000-1:40000.

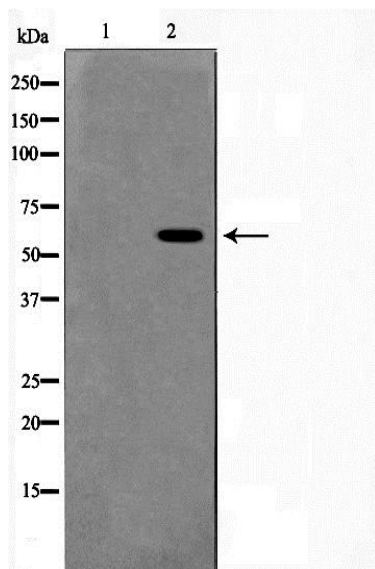


ELISA analysis of Phospho-ERK8 (Thr175+Tyr177) Antibody showing specificity to Phospho-ERK8 (Thr175+Tyr177) peptide.

Peptides concentration: 1ug/ml.  
P-peptide: phospho-peptide  
N-peptide: non-phospho-peptide.



IF/ICC staining of HeLa cells using Phospho-ERK8 (Thr175+Tyr177) Antibody.



Western blot analysis on Jurkat cell lysate using Phospho-ERK8 (Thr175+Tyr177) Antibody, The lane on the left is treated with the antigen-specific peptide.

**RELATED PRODUCTS:**

- Phospho-Erk1/2 Antibody (3441).
- p44/42 MAPK (Erk1/2) Antibody (3085R).
- Anti-Phospho-ERK1/2 (Thr202/Tyr204) Antibody (A1589).
- Phospho-ERK1/2 (Thr202/Tyr204) Translocation Assay Kit (Cell-Based) (K696).

**FOR RESEARCH USE ONLY! Not to be used on humans.**