

Anti-ADD1 Antibody

CATALOG NO.: A1744-100 100 µl.

BACKGROUND DESCRIPTION: Adducins are a family of cytoskeleton proteins encoded by three genes (alpha, beta, and gamma). Adducin is a heterodimeric protein that consists of related subunits, which are produced from distinct genes but share a similar structure. Alpha- and beta-adducin include a protease-resistant N-terminal region and a protease-sensitive, hydrophilic C-terminal region. Alpha- and gamma-adducins are ubiquitously expressed. In contrast, beta-adducin is expressed at high levels in brain and hematopoietic tissues. Adducin binds with high affinity to Ca(2+)/calmodulin and is a substrate for protein kinases A and C. Alternative splicing results in multiple variants encoding distinct isoforms; however, not all variants have been fully described.

ALTERNATE NAMES: ADDA, Adducin 1 (alpha), Alpha adducin, Alpha-adducin, Erythrocyte adducin alpha subunit, Erythrocyte adducin subunit.

ANTIBODY TYPE: Polyclonal

CONCENTRATION: 0.4 mg/ml

HOST/ISOTYPE: Rabbit / IgG.

IMMUNOGEN: Recombinant protein of human ADD1.

PURIFICATION: Affinity purification.

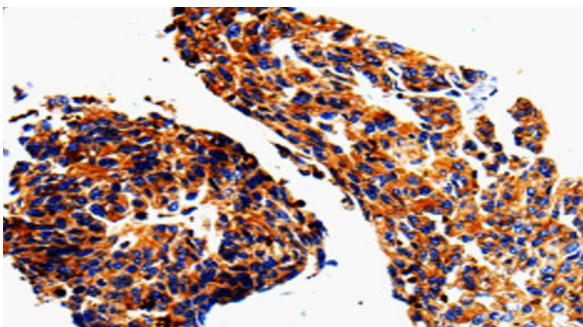
FORM: Liquid.

FORMULATION: PBS with 0.05% sodium azide, 50% glycerol, PH7.3

SPECIES REACTIVITY: Rat.
Mouse.
Human.

STORAGE CONDITIONS: Store at -20°C; Store at -20°C; For long term storage store at -20°C in small aliquots to prevent freeze-thaw cycles.

APPLICATIONS AND USAGE: IHC 1:50-1:200.



: IHC staining of paraffin-embedded Human lung cancer tissue using Anti-ADD1 Antibody.

RELATED PRODUCTS:

Felbamate (B2004).
 Link-FAST™ 5 Minutes DNA Ligation Kit (K902).
 USP15 Antibody (6135).
 USP5 Antibody (6132).