

Anti-Caspase-7 Antibody

CATALOG NO.: A1752-100 100 µl.

BACKGROUND DESCRIPTION: This gene encodes a member of the cysteine-aspartic acid protease (caspase) family. Sequential activation of caspases plays a central role in the execution-phase of cell apoptosis. Caspases exist as inactive proenzymes which undergo proteolytic processing at conserved aspartic residues to produce two subunits, large and small, that dimerize to form the active enzyme. The precursor of the encoded protein is cleaved by caspase 3 and 10, is activated upon cell death stimuli and induces apoptosis. Alternatively spliced transcript variants encoding multiple isoforms have been observed for this gene.

ALTERNATE NAMES: Apoptotic protease Mch-3, CMH-1, ICE-LAP3, ICE-like apoptotic protease 3, LICE2, MCH3.

ANTIBODY TYPE: Polyclonal

CONCENTRATION: 0.1 mg/ml

HOST/ISOTYPE: Rabbit / IgG.

IMMUNOGEN: Recombinant protein of human CASP7.

MOLECULAR WEIGHT: 34 kDa.

PURIFICATION: Affinity purification.

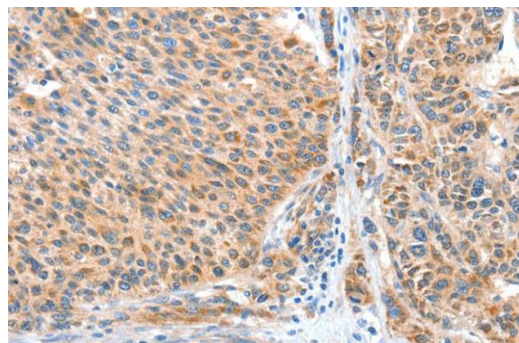
FORM: Liquid.

FORMULATION: PBS with 0.05% sodium azide, 50% glycerol, PH7.3

SPECIES REACTIVITY: Mouse.
Human.

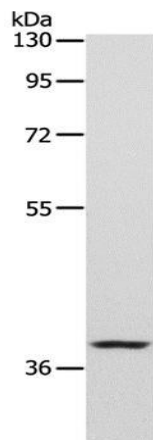
STORAGE CONDITIONS: Store at -20°C. Avoid freeze / thaw cycles.

APPLICATIONS AND USAGE: WB 1:200-1:1000, IHC 1:25-1:100.

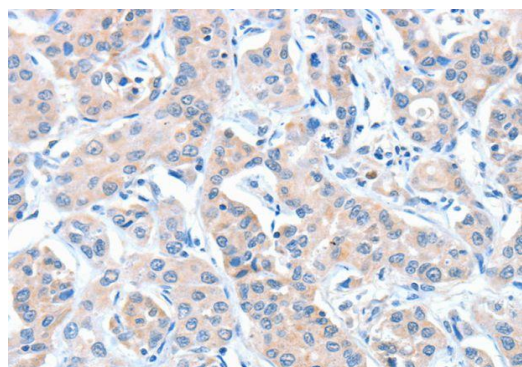


: IHC staining of paraffin-embedded Human liver cancer using Anti-Caspase-7 Antibody.

03/19



: Western Blot analysis of Mouse brain tissue using Anti-Caspase-7 Antibody.



: IHC staining of paraffin-embedded Human lung cancer using Anti-Caspase-7 Antibody.

RELATED PRODUCTS:

- Caspase-7, human recombinant (1087).
- Caspase-7 Inhibitor Drug Screening Kit (Fluorometric) (K157).
- Caspase-7 Blocking Peptide (3135BP).
- Caspase-7 Antibody (3135).
- Caspase-7 (Human) ELISA Kit (E4295).

FOR RESEARCH USE ONLY! Not to be used on humans.