

Anti-CREB1 Antibody

CATALOG NO.: A1754-100 100 µl.

BACKGROUND DESCRIPTION: This gene encodes a transcription factor that is a member of the leucine zipper family of DNA binding proteins. This protein binds as a homodimer to the cAMP-responsive element, an octameric palindrome. The protein is phosphorylated by several protein kinases, and induces transcription of genes in response to hormonal stimulation of the cAMP pathway. Alternate splicing of this gene results in two transcript variants encoding different isoforms.

ALTERNATE NAMES: Active transcription factor CREB, cAMP response element binding protein 1, Cyclic AMP-responsive element-binding protein 1, MGC9284.

ANTIBODY TYPE: Polyclonal

CONCENTRATION: 0.2 mg/ml

HOST/ISOTYPE: Rabbit / IgG.

IMMUNOGEN: Recombinant protein of human CREB1.

PURIFICATION: Affinity purification.

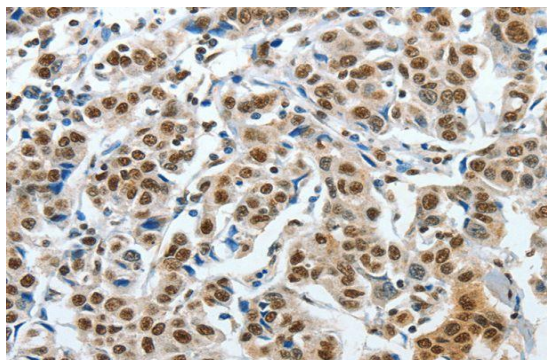
FORM: Liquid.

FORMULATION: PBS with 0.05% sodium azide, 50% glycerol, PH7.3

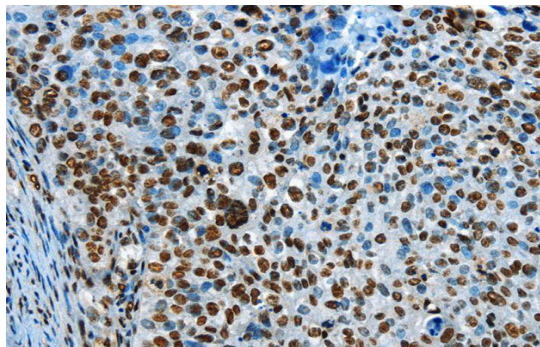
SPECIES REACTIVITY: Rat.
Mouse.
Human.

STORAGE CONDITIONS: Store at 4°C. Avoid freeze / thaw cycles..

APPLICATIONS AND USAGE: IHC 1:25-1:100.



: IHC staining of paraffin-embedded Human breast cancer tissue using Anti-CREB1 Antibody.



: IHC staining of paraffin-embedded Human cervical cancer tissue using Anti-CREB1 Antibody.

RELATED PRODUCTS:

- Phospho-CREB-1 (Ser133) Antibody (A1269).
- TRAF6 Antibody (3566).
- CREB Antibody (3360R).
- CREB Blocking Peptide (3360RBP).
- CREB Binding Protein bromodomain (1081-1197 aa) (GST-tagged), Human recombinant (7659).
- sTNF-RI, human recombinant (4348).

FOR RESEARCH USE ONLY! Not to be used on humans.