

Anti-AIMP2 Antibody

CATALOG NO.: A1760-100 100 µl.

BACKGROUND DESCRIPTION: The JTV1 gene is located on chromosome 7p22 flanked by two genes, HRI and PMS2. JTV1 and HRI overlap slightly and are arranged in a tail-to-tail fashion. JTV1 and PMS2 are separated by approximately 200 base pairs and are arranged head-to-head. JTV1 is transcribed in the opposite direction compared to HRI and PMS2. The function of the JTV1 gene product is unknown.

ALTERNATE NAMES: JTV 1, P38, PRO0992, Protein JTV-1, Multisynthase complex auxiliary component p38.

ANTIBODY TYPE: Polyclonal

CONCENTRATION: 0.3 mg/ml

HOST/ISOTYPE: Rabbit / IgG.

IMMUNOGEN: Recombinant protein of human AIMP2.

MOLECULAR WEIGHT: 35 kDa.

PURIFICATION: Affinity purification.

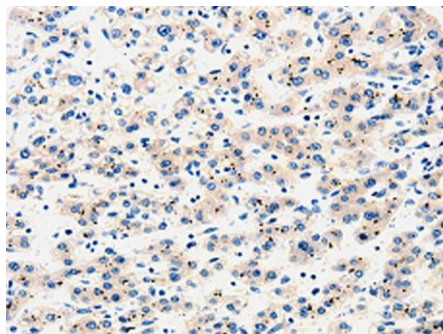
FORM: Liquid.

FORMULATION: PBS with 0.05% sodium azide, 50% glycerol, PH7.3

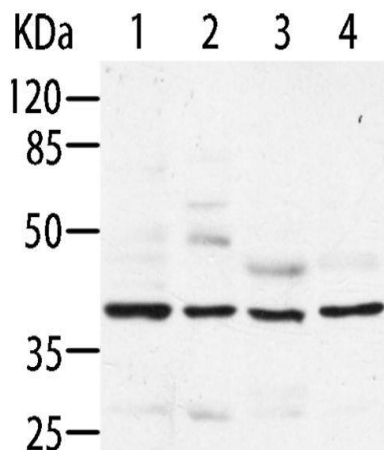
SPECIES REACTIVITY: Rat.
Mouse.
Human.

STORAGE CONDITIONS: Store at -20°C. Avoid freeze / thaw cycles.

APPLICATIONS AND USAGE: WB 1:200-1:1000, IHC 1:10-1:50.



: IHC staining of paraffin-embedded Human liver cancer using Anti-AIMP2 Antibody.



: Western Blot analysis of HeLa, HepG2, MCF-7 and HT-29 cell using Anti-AIMP2 Antibody.

RELATED PRODUCTS:

- Anti-Ubiquitin Antibody (A1702).
- Anti-MYCBP Antibody (A1199).
- Ubiquitin, human recombinant (4841).
- 5-hmC polyclonal antibody (rabbit) (6830).

FOR RESEARCH USE ONLY! Not to be used on humans.