

# Anti-Gamma synuclein (SNCG) Antibody

**CATALOG NO.:** A1761-100 100 µl.

**BACKGROUND DESCRIPTION:** This gene encodes a member of the synuclein family of proteins which are believed to be involved in the pathogenesis of neurodegenerative diseases. Mutations in this gene have also been associated with breast tumor development.

**ALTERNATE NAMES:** BCSG1, Breast cancer specific gene 1 protein, Persyn, PRSN, SNCG, SYUG.

**ANTIBODY TYPE:** Polyclonal

**CONCENTRATION:** 0.8 mg/ml

**HOST/ISOTYPE:** Rabbit / IgG.

**IMMUNOGEN:** Recombinant protein of human SNCG.

**MOLECULAR WEIGHT:** 13 kDa.

**PURIFICATION:** Affinity purification.

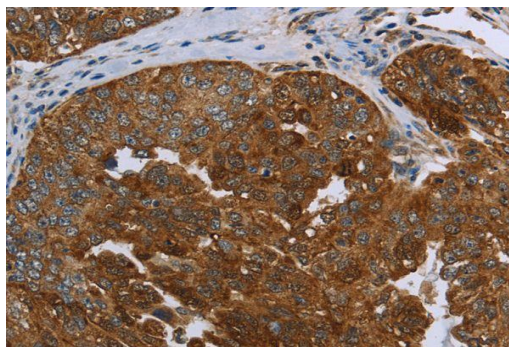
**FORM:** Liquid.

**FORMULATION:** PBS with 0.05% sodium azide, 50% glycerol, PH7.3

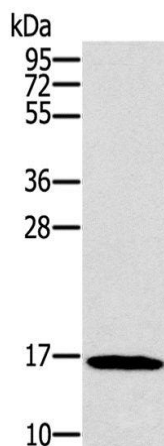
**SPECIES REACTIVITY:** Human.

**STORAGE CONDITIONS:** Store at -20°C. Avoid freeze / thaw cycles.

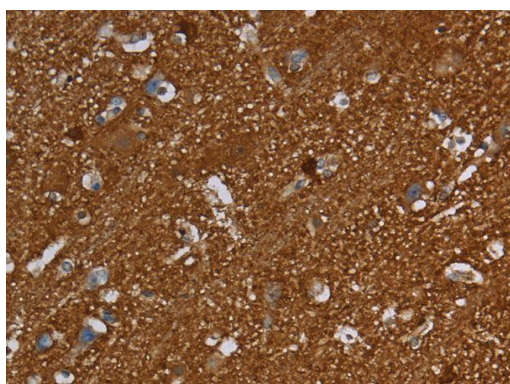
**APPLICATIONS AND USAGE:** WB 1:500-1:2000, IHC 1:100-1:300.



: IHC staining of paraffin-embedded Human ovarian cancer using Anti-Gamma synuclein (SNCG) Antibody.



: Western Blot analysis of HT-29 cell using Anti-Gamma synuclein (SNCG) Antibody.



: IHC staining of paraffin-embedded Human brain using Anti-Gamma synuclein (SNCG) Antibody.

**RELATED PRODUCTS:**

- BRCA1 Antibody (3364).
- BRCA1 (Human) ELISA Kit (K4239).
- Phospho-BRCA1 (Ser1457) Antibody (A1719).
- BCRP (ABCG2) Antibody (6971).

**FOR RESEARCH USE ONLY! Not to be used on humans.**