

Anti-NFKBIE Antibody

CATALOG NO.: A1762-100 100 µl.

BACKGROUND DESCRIPTION: The protein encoded by this gene binds to components of NF-kappa-B, trapping the complex in the cytoplasm and preventing it from activating genes in the nucleus. Phosphorylation of the encoded protein targets it for destruction by the ubiquitin pathway, which activates NF-kappa-B by making it available to translocate to the nucleus. NFKBIE protein expression is up-regulated following NF-kB activation and during myelopoiesis. NFKBIE is able to inhibit NF-kB-directed transactivation via cytoplasmic retention of REL proteins. NFKB1 or NFKB2 is bound to REL, RELA, or RELB to form the NF-kB transcription factor complex. The NF-kB complex is inhibited by I-kappa-B proteins (NFKBIA or NFKBIB), which inactivate NF-kappa-B by trapping it in the cytoplasm.

ALTERNATE NAMES: I kappa B epsilon, IKBE, IKBE, MGC72568, NF kappa B inhibitor epsilon, Slc35b2.

ANTIBODY TYPE: Polyclonal

CONCENTRATION: 0.3 mg/ml

HOST/ISOTYPE: Rabbit / IgG.

IMMUNOGEN: Recombinant protein of human NFKBIE.

MOLECULAR WEIGHT: 45 kDa.

PURIFICATION: Affinity purification.

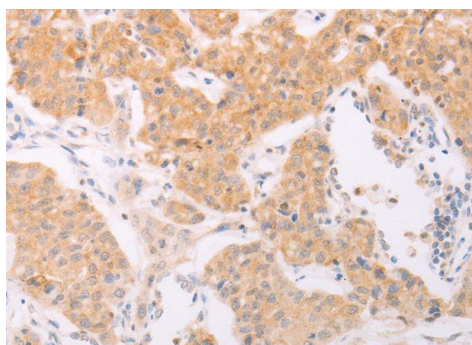
FORM: Liquid.

FORMULATION: PBS with 0.05% sodium azide, 50% glycerol, PH7.3

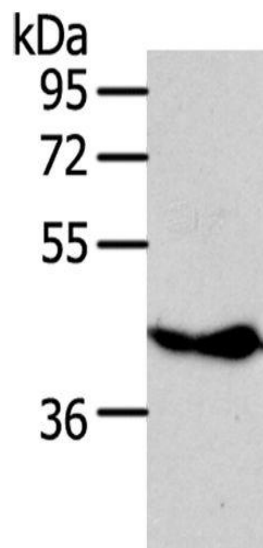
SPECIES REACTIVITY: Mouse.
Human.

STORAGE CONDITIONS: Store at -20°C. Avoid freeze / thaw cycles.

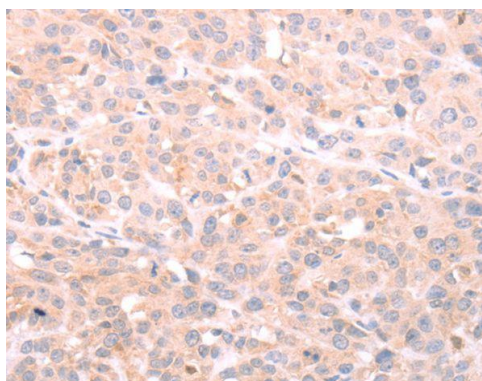
APPLICATIONS AND USAGE: WB 1:200-1:1000, IHC 1:50-1:200.



: IHC staining of paraffin-embedded Human lung cancer using Anti-NFKBIE Antibody.



: Western Blot analysis of Raji cell using Anti-NFKBIE Antibody.



: IHC staining of paraffin-embedded Human esophagus cancer using Anti-NFKBIE Antibody.

RELATED PRODUCTS:

- Anti-Phospho- NF kappaB p65 (Ser536) Antibody (A1590).
- NFkB p105 Antibody (3897).
- NFkB p65 Antibody (Clone 2A12A7) (3012).
- Anti-NFkB p65 Rabbit Monoclonal Antibody (A1591).
- IKK16 (B1087).

FOR RESEARCH USE ONLY! Not to be used on humans.