

# Anti-BAG1 Antibody

**CATALOG NO.:** A1768-100 100 µl.

**BACKGROUND DESCRIPTION:** The oncogene BCL2 is a membrane protein that blocks a step in a pathway leading to apoptosis or programmed cell death. The protein encoded by this gene binds to BCL2 and is referred to as BCL2-associated athanogene. It enhances the anti-apoptotic effects of BCL2 and represents a link between growth factor receptors and anti-apoptotic mechanisms. Multiple protein isoforms are encoded by this mRNA through the use of a non-AUG (CUG) initiation codon, and three alternative downstream AUG initiation codons. A related pseudogene has been defined on chromosome X.

**ALTERNATE NAMES:** RAP46, HAP1, Haptoglobin, BCL 2 Associated Athanogene 1.

**ANTIBODY TYPE:** Polyclonal

**CONCENTRATION:** 0.1 mg/ml

**HOST/ISOTYPE:** Rabbit / IgG.

**IMMUNOGEN:** Recombinant protein of human BAG1.

**MOLECULAR WEIGHT:** 39 kDa.

**PURIFICATION:** Affinity purification.

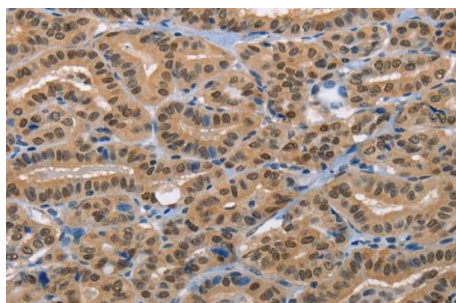
**FORM:** Liquid.

**FORMULATION:** PBS with 0.05% sodium azide, 50% glycerol, PH7.3

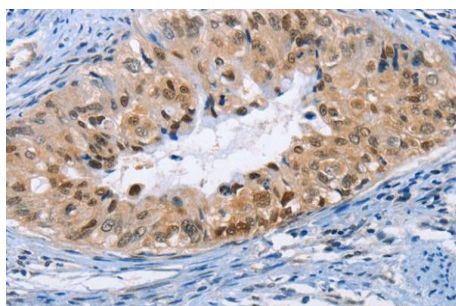
**SPECIES REACTIVITY:** Human.

**STORAGE CONDITIONS:** Store at -20°C. Avoid freeze / thaw cycles.

**APPLICATIONS AND USAGE:** WB 1:500-1:2000, IHC 1:25-1:100.

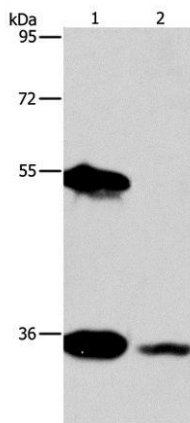


IHC staining of paraffin-embedded Human thyroid cancer using Anti-BAG1 Antibody.



IHC staining of paraffin-embedded Human cervical cancer using Anti-BAG1 Antibody.

04/19



Western Blot analysis of HeLa and Raji cell using Anti-BAG1 Antibody.

**RELATED PRODUCTS:**

- SODD Antibody (Cat# 3221).
- Anti-Bcl-X Antibody (2H12) (Cat# A1438).
- Human CellExp™ LRRC4 /NGL-2, human recombinant (Cat# 7461).
- BAG 956 (Cat# 2456).
- Bcl-2 Antibody (Clone Bcl-2/100) (Cat# 3195).

***FOR RESEARCH USE ONLY! Not to be used on humans.***