

Anti-BNIP1 Antibody

CATALOG NO.: A1769-100 100 µl.

BACKGROUND DESCRIPTION: This gene is a member of the BCL2/adenovirus E1B 19 kd-interacting protein (BNIP) family. It interacts with the E1B 19 kDa protein, which protects cells from virally-induced cell death. The encoded protein also interacts with E1B 19 kDa-like sequences of BCL2, another apoptotic protector. In addition, this protein is involved in vesicle transport into the endoplasmic reticulum. Alternative splicing of this gene results in four protein products with identical N- and C-termini.

ALTERNATE NAMES: Nip1, SEC20, TRG-8, BCL2 adenovirus E1B 19kD interacting protein 1.

ANTIBODY TYPE: Polyclonal

CONCENTRATION: 0.3 mg/ml

HOST/ISOTYPE: Rabbit / IgG.

IMMUNOGEN: Recombinant protein of human BNIP1.

MOLECULAR WEIGHT: 26 kDa.

PURIFICATION: Affinity purification.

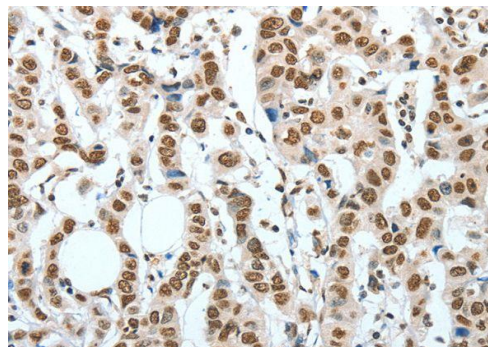
FORM: Liquid.

FORMULATION: PBS with 0.05% sodium azide, 50% glycerol, PH7.3

SPECIES REACTIVITY: Rat.
Mouse.
Human.

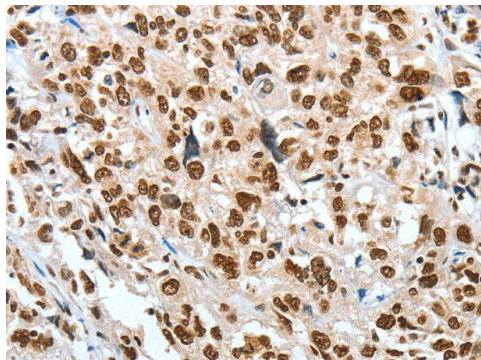
STORAGE CONDITIONS: Store at -20°C. Avoid freeze / thaw cycles.

APPLICATIONS AND USAGE: WB 1:200-1:1000, IHC 1:50-1:200.

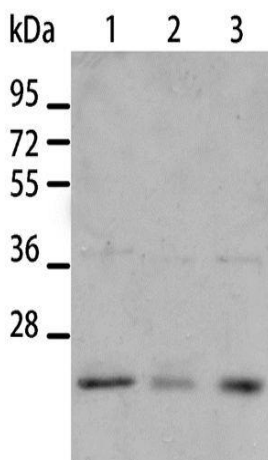


IHC staining of paraffin-embedded Human breast cancer using Anti-BNIP1 Antibody.

04/19



IHC staining of paraffin-embedded Human esophagus cancer using Anti-BNIP1 Antibody.



Western Blot analysis of A431 and A172 cell, Human liver cancer tissue using Anti-BNIP1 Antibody.

RELATED PRODUCTS:

- Bnip3L/Nix Antibody (Cat# 3205).
- BAX (Human) ELISA Kit (Cat# E4511).
- BAX (Mouse) ELISA Kit (Cat# E4512).
- Bcl-2 Antibody (Cat# 30333).
- Bcl-2 Blocking Peptide (Cat# 3033BP).
- Bcl-2 Antibody (Clone Bcl-2/100) (Cat# 3195).

FOR RESEARCH USE ONLY! Not to be used on humans.