

04/19

Anti-IL10RA Antibody

CATALOG NO.: A1770-100 100 µl.

BACKGROUND DESCRIPTION: The protein encoded by this gene is a receptor for interleukin 10. This protein is structurally related to interferon receptors. It has been shown to mediate the immunosuppressive signal of interleukin 10, and thus inhibits the synthesis of proinflammatory cytokines. This receptor is reported to promote survival of progenitor myeloid cells through the insulin receptor substrate-2/PI 3-kinase/AKT pathway. Activation of this receptor leads to tyrosine phosphorylation of JAK1 and TYK2 kinases. Two transcript variants, one protein-coding and the other not protein-coding, have been found for this gene.

ALTERNATE NAMES: CD210, CDw210a, HIL-10R, Interleukin 10 receptor alpha, Interleukin-10 receptor subunit 1.

ANTIBODY TYPE: Polyclonal

CONCENTRATION: 0.6 mg/ml

HOST/ISOTYPE: Rabbit / IgG.

IMMUNOGEN: Recombinant protein of human IL10RA.

PURIFICATION: Affinity purification.

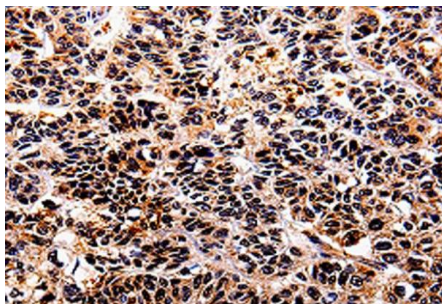
FORM: Liquid.

FORMULATION: PBS with 0.05% sodium azide, 50% glycerol, PH7.3

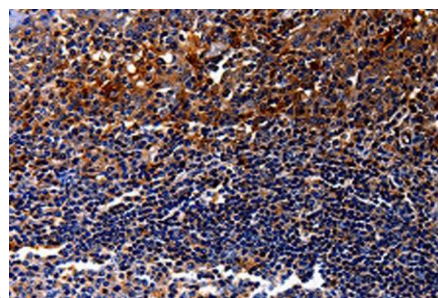
SPECIES REACTIVITY: Human.

STORAGE CONDITIONS: Store at -20°C. Avoid freeze / thaw cycles.

APPLICATIONS AND USAGE: IHC 1:25-1:100.



IHC staining of paraffin-embedded Human lung cancer tissue using Anti-IL10RA Antibody



IHC staining of paraffin-embedded Human tonsil tissue using Anti-IL10RA Antibody.

RELATED PRODUCTS:

- Human CellExp™ IL-10, Human Recombinant (Cat# 6466).
- IL-10, human recombinant (Cat# 4155).
- IL-10 Antibody (Cat# 6638).
- Anti-CD20 Rabbit Monoclonal Antibody (Cat# A1594).
- IL-10 (Human) ELISA Kit (Cat# K4167).

FOR RESEARCH USE ONLY | Not to be used on humans

Gentaur Europe BVBA Voortstraat 49, 1910 Kampenhout BELGIUM
Tel 0032 16 58 90 45 info@gentaur.com

