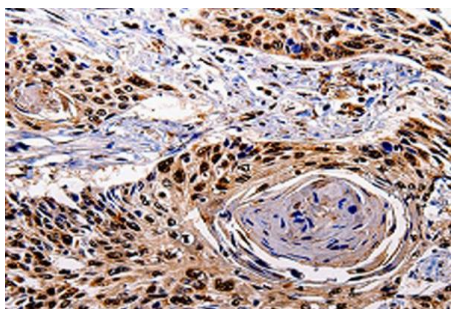


Anti-IL10RB Antibody

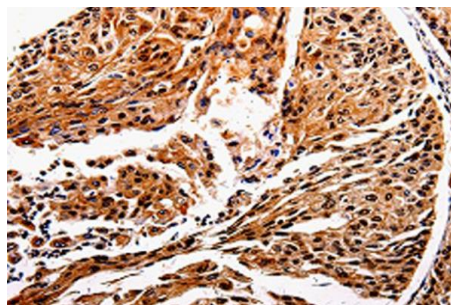
CATALOG NO.: A1771-100 100 µl.

BACKGROUND DESCRIPTION: The protein encoded by this gene belongs to the cytokine receptor family. It is an accessory chain essential for the active interleukin 10 receptor complex. Co-expression of this and IL10RA proteins has been shown to be required for IL10-induced signal transduction. This gene and three other interferon receptor genes, IFAR2, IFNAR1, and IFNGR2, form a class II cytokine receptor gene cluster located in a small region on chromosome 21.

ALTERNATE NAMES:	Cd210, CDw210b, CRF2 4, Cytokine receptor class II, Cytokine receptor class II CRF2 4, Cytokine receptor class-II member 4, Cytokine receptor family 2 member 4, D21S58, IL-10 receptor subunit beta, IL-10R subunit 2, IL-10R subunit beta, Interleukin 10 receptor beta, Interleukin-10 receptor subunit 2, Interleukin-10 receptor subunit beta.
ANTIBODY TYPE:	Polyclonal
CONCENTRATION:	0.5 mg/ml
HOST/ISOTYPE:	Rabbit / IgG.
IMMUNOGEN:	Recombinant protein of human IL10RB.
PURIFICATION:	Affinity purification.
FORM:	Liquid.
FORMULATION:	PBS with 0.05% sodium azide, 50% glycerol, PH7.3
SPECIES REACTIVITY:	Human.
STORAGE CONDITIONS:	Store at -20°C. Avoid freeze / thaw cycles.
APPLICATIONS AND USAGE:	IHC 1:25-1:100.



IHC staining of paraffin-embedded Human esophagus cancer tissue using Anti-IL10RB Antibody.



IHC staining of paraffin-embedded Human cervical cancer tissue using Anti-IL10RB Antibody.

RELATED PRODUCTS:

- IL-10, rat recombinant (Cat# 4157).
- IL-10 (Human) ELISA Kit (Cat# K4167).
- Human CellExp™ IL-10, Human Recombinant (Cat# 6466).
- IL-10, human recombinant (Cat# 4155).
- Anti- CDw75 Antibody (LN-1) (Cat# A1573).

FOR RESEARCH USE ONLY. Not to be used on humans.

Gentaur Europe BVBA Voortstraat 49, 1910 Kampenhout BELGIUM
Tel 0032 16 58 90 45 info@gentaur.com

